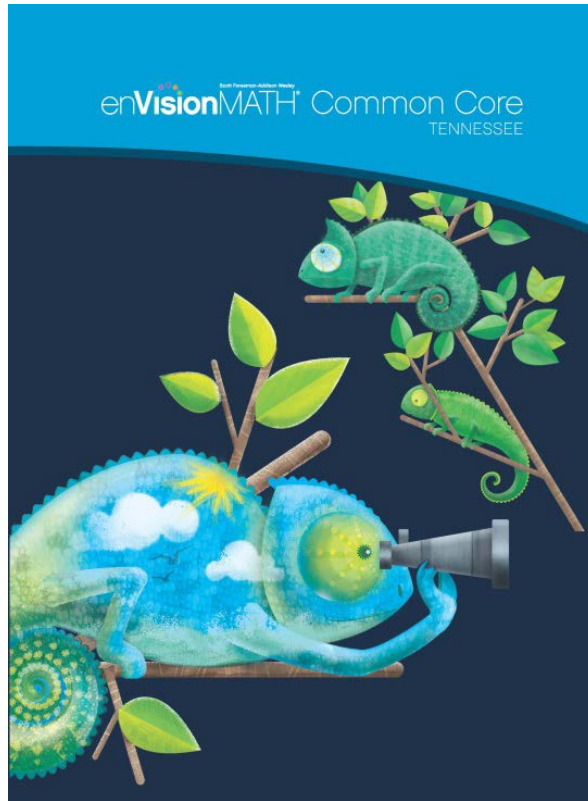


A Correlation of

en**VISION**MATH™  
Common Core ©2015



to the

**TN**Core

**Common Core State Standards  
for Mathematics**

**Bid Category 11-010-40**

**Grade 4**

**A Correlation of *enVisionMATH* Common Core Tennessee, ©2015  
to the TNCore Common Core State Standards for Mathematics – Grade 4**

TNCore Common Core State Standards for Mathematics Grade 4	enVisionMATH Common Core Tennessee ©2015
<b>Operations and Algebraic Thinking</b>	
<b>Use the four operations with whole numbers to solve problems.</b>	
[4.OA.A.1] Interpret a multiplication equation as a comparison, e.g., interpret $35 = 5 \times 7$ as a statement that 35 is 5 times as many as 7 and 7 times as many as 5. Represent verbal statements of multiplicative comparisons as multiplication equations.	<b>SE/TE:</b> Topic 1: 6-9, 18-19, 24-25, 30-31, 32-33  <b>TE:</b> Topic 1: 6A-9B, 18A-19B, 24A-25B, 30A-31B
[4.OA.A.2] Multiply or divide to solve word problems involving multiplicative comparison, e.g., by using drawings and equations with a symbol for the unknown number to represent the problem, distinguishing multiplicative comparison from additive comparison.	<b>SE/TE:</b> Topic 1: 20-23, 24-25, 30-31, 32-33; Topic 6: 148-151, 154-157  <b>TE:</b> Topic 1: 20A-23B, 24A-25B, 30A-31B; Topic 6: 148A-151B, 154A-157B
[4.OA.A.3] Solve multistep word problems posed with whole numbers and having whole-number answers using the four operations, including problems in which remainders must be interpreted. Represent these problems using equations with a letter standing for the unknown quantity. Assess the reasonableness of answers using mental computation and estimation strategies including rounding.	<b>SE/TE:</b> Topic 1: 12-13, 14-17, 26-27, 28-29, 32-33; Topic 2: 54-57, 58-59; Topic 4: 104-107, 108-109; Topic 5: 122-123, 124-125, 126-129, 130-131; Topic 6: 142-143, 144-147, 152-153; Topic 7: 170-171, 176-177, 178-179; Topic 8: 196-197, 198-199; Topic 9: 206-207; Topic 10: 244-245, 248-249  <b>TE:</b> Topic 1: 12A-13B, 14A-17B, 26A-27B, 28A-29B; Topic 2: 54A-57B; Topic 4: 104A-1047B; Topic 5: 122A-123B, 124A-125B, 126A-129B; Topic 6: 142A-143B, 144A-147B, 152A-153B; Topic 7: 170A-171B, 176A-177B; Topic 8: 196A-197B; Topic 9: 206A-207B; Topic 10: 244A-245B
<b>Gain familiarity with factors and multiples.</b>	
[4.OA.B.4] Find all factor pairs for a whole number in the range 1–100. Recognize that a whole number is a multiple of each of its factors. Determine whether a given whole number in the range 1–100 is a multiple of a given one-digit number. Determine whether a given whole number in the range 1–100 is prime or composite.	<b>SE/TE:</b> Topic 11: 256-257, 258-259, 260-261, 278-279  <b>TE:</b> Topic 11: 256A-257B, 258A-259B, 260A-261B

**A Correlation of *enVisionMATH* Common Core Tennessee, ©2015  
to the TNCore Common Core State Standards for Mathematics – Grade 4**

TNCore Common Core State Standards for Mathematics Grade 4	enVisionMATH Common Core Tennessee ©2015
<b>Generate and analyze patterns.</b>	
[4.OA.C.5]Generate a number or shape pattern that follows a given rule. Identify apparent features of the pattern that were not explicit in the rule itself.	<b>SE/TE:</b> Topic 1: 10-11, 32-33; Topic 2: 40-41, 42-43, 44-45, 46-49, 50-53, 58-59; Topic 16: 442-443  <b>TE:</b> Topic 1: 10A-11B; Topic 2: 40A-41B, 42A-43B, 44A-45B, 46A-49B, 50A-53B; Topic 16: 442A-443B
<b>Number and Operations in Base Ten</b>	
<b>Generalize place value understanding for multi-digit whole numbers.</b>	
[4.NBT.A.1]Recognize that in a multi-digit whole number, a digit in one place represents ten times what it represents in the place to its right.	<b>SE/TE:</b> Topic 3: 68-69, 80-81, 82-83  <b>TE:</b> Topic 3: 68A-69B, 80A-81B
[4.NBT.A.2]Read and write multi-digit whole numbers using base-ten numerals, number names, and expanded form. Compare two multi-digit numbers based on meanings of the digits in each place, using $>$ , $=$ , and $<$ symbols to record the results of comparisons.	<b>SE/TE:</b> Topic 3: 66-67, 68-69, 70-73, 74-77, 80-81, 82-83  <b>TE:</b> Topic 3: 66A-67B, 68A-69B, 70A-73B, 74A-77B, 80A-81B
[4.NBT.A.3]Use place value understanding to round multi-digit whole numbers to any place.	<b>SE/TE:</b> Topic 3: 78-79, 82-83; Topic 4: 108-109; Topic 5: 122-123, 124-125, 126-129, 130-131; Topic 6: 152-153; Topic 7: 174-175, 178-179  <b>TE:</b> Topic 3: 78A-79B; Topic 5: 122A-123B, 124A-125B, 126A-129B; Topic 6: 152A-153B; Topic 7: 174A-175B
<b>Use place value understanding and properties of operations to perform multi-digit arithmetic.</b>	
[4.NBT.B.4]Fluently add and subtract multi-digit whole numbers using the standard algorithm.	<b>SE/TE:</b> Topic 4: 90-93, 94-95, 96-99, 102-103, 104-107, 108-109  <b>TE:</b> Topic 4: 90A-93B, 94A-95B, 96A-99B, 100A-101B, 102A-103B

**A Correlation of *enVisionMATH* Common Core Tennessee, ©2015  
to the TNCore Common Core State Standards for Mathematics – Grade 4**

<p align="center"><b>TNCore Common Core State Standards for Mathematics Grade 4</b></p>	<p align="center"><b>enVisionMATH Common Core Tennessee ©2015</b></p>
<p>[4.NBT.B.5] Multiply a whole number of up to four digits by a one-digit whole number, and multiply two two-digit numbers, using strategies based on place value and the properties of operations. Illustrate and explain the calculation by using equations, rectangular arrays, and/or area models.</p>	<p><b>SE/TE:</b> Topic 5: 116-117, 118-119, 120-121, 122-123, 124-125, 126-129, 130-131; Topic 6: 138-141, 142-143, 144-147, 148-151, 152-153, 154-157, 158-159; Topic 7: 166-169, 170-171, 172-173, 174-175, 176-177, 178-179; Topic 8: 186-189, 190-191, 192-193, 194-195, 196-197, 198-199; Topic 9: 214-217; Topic 10: 244-245, 248-249</p> <p><b>TE:</b> Topic 5: 116A-117B, 118A-119B, 120A-121B, 122A-123B, 124A-125B, 126A-129B; Topic 6: 138A-141B, 142A-143B, 144A-147B, 148A-151B, 152A-153B, 154A-157B; Topic 7: 166A-169B, 170A-171B, 172A-173B, 174A-175B, 176A-177B; Topic 8: 186A-189B, 190A-191B, 192A-193B, 194A-195B, 196A-197B; Topic 9: 214A-217B; Topic 10: 244A-245B</p>
<p>[4.NBT.B.6] Find whole-number quotients and remainders with up to four-digit dividends and one-digit divisors, using strategies based on place value, the properties of operations, and/or the relationship between multiplication and division. Illustrate and explain the calculation by using equations, rectangular arrays, and/or area models.</p>	<p><b>SE/TE:</b> Topic 9: 206-207, 208-209, 210-211, 212-213, 214-217, 218-219, 220-221; Topic 10: 228-229, 230-233, 234-237, 238-239, 240-241, 242-243, 246-247, 248-249</p> <p><b>TE:</b> Topic 9: 206A-207B, 208A-209B, 210A-211B, 212A-213B, 214A-217B, 218A-219B; Topic 10: 228A-229B, 230A-233B, 234A-237B, 238A-239B, 240A-241B, 242A-243B</p>
<p><b>Number and Operations—Fractions</b></p>	
<p><b>Extend understanding of fraction equivalence and ordering.</b></p>	
<p>[4.NF.A.1] Explain why a fraction <math>a/b</math> is equivalent to a fraction <math>(n \times a)/(n \times b)</math> by using visual fraction models, with attention to how the number and size of the parts differ even though the two fractions themselves are the same size. Use this principle to recognize and generate equivalent fractions.</p>	<p><b>SE/TE:</b> Topic 11: 262-265, 266-267, 274-277, 278-279, 280-281</p> <p><b>TE:</b> Topic 11: 262A-265B, 266A-267B, 274A-277B</p>

**A Correlation of *enVisionMATH* Common Core Tennessee, ©2015  
to the TNCore Common Core State Standards for Mathematics – Grade 4**

<p align="center"><b>TNCore Common Core State Standards for Mathematics Grade 4</b></p>	<p align="center"><b>enVisionMATH Common Core Tennessee ©2015</b></p>
<p>[4.NF.A.2] Compare two fractions with different numerators and different denominators, e.g., by creating common denominators or numerators, or by comparing to a benchmark fraction such as <math>\frac{1}{2}</math>. Recognize that comparisons are valid only when the two fractions refer to the same whole. Record the results of comparisons with symbols <math>&gt;</math>, <math>=</math>, or <math>&lt;</math>, and justify the conclusions, e.g., by using a visual fraction model.</p>	<p><b>SE/TE:</b> Topic 11: 266-267, 268-271, 272-273, 274-277, 280-281</p> <p><b>TE:</b> Topic 11: 266A-267B, 268A-271B, 272A-273B, 274A-277B</p>
<p align="center"><b>Build fractions from unit fractions by applying and extending previous understandings of operations on whole numbers.</b></p>	
<p>[4.NF.B.3] Understand a fraction <math>\frac{a}{b}</math> with <math>a &gt; 1</math> as a sum of fractions <math>\frac{1}{b}</math>.</p>	<p><b>SE/TE:</b> Topic 12: 288-289, 290-291, 292-293, 294-295, 296-299, 300-303, 304-307, 308-311, 310-311, 312-313, 314-317</p> <p><b>TE:</b> Topic 12: 288A-289B, 290A-291B, 292A-293B, 294A-295B, 296A-299B, 300A-303B, 304A-307B, 308A-309B, 310A-311B, 312A-313B, 314A-317B</p>
<p>[4.NF.3.a] Understand addition and subtraction of fractions as joining and separating parts referring to the same whole.</p>	<p><b>SE/TE:</b> Topic 12: 288-289, 290-291, 292-293, 294-295, 296-299, 314-317, 318-319, 320-321</p> <p><b>TE:</b> Topic 12: 288A-289B, 290A-291B, 292A-293B, 294A-295B, 296A-299B, 314A-317B</p>
<p>[4.NF.B.3.b] Decompose a fraction into a sum of fractions with the same denominator in more than one way, recording each decomposition by an equation. Justify decompositions, e.g., by using a visual fraction model.</p>	<p><b>SE/TE:</b> Topic 12: 300-303, 304-307, 312-313, 318-319, 320-321</p> <p><b>TE:</b> Topic 12: 300A-303B, 304A-307B, 312A-313B</p>
<p>[4.NF.B.3.c] Add and subtract mixed numbers with like denominators, e.g., by replacing each mixed number with an equivalent fraction, and/or by using properties of operations and the relationship between addition and subtraction.</p>	<p><b>SE/TE:</b> Topic 12: 300-303, 304-307, 308-309, 310-311, 320-321</p> <p><b>TE:</b> Topic 12: 300A-303B, 304A-307B, 308A-309B, 310A-311B</p>
<p>[4.NF.B.3.d] Solve word problems involving addition and subtraction of fractions referring to the same whole and having like denominators, e.g., by using visual fraction models and equations to represent the problem.</p>	<p><b>SE/TE:</b> Topic 12: 290-291, 292-293, 294-295, 296-299, 312-313, 314-317, 318-318, 320-321</p> <p><b>TE:</b> Topic 12: 290A-291B, 292A-293B, 294A-295B, 296A-299B, 312A-313B, 314A-317B</p>

**A Correlation of *enVisionMATH* Common Core Tennessee, ©2015  
to the TNCore Common Core State Standards for Mathematics – Grade 4**

TNCore Common Core State Standards for Mathematics Grade 4	enVisionMATH Common Core Tennessee ©2015
[4.NF.B.4] Apply and extend previous understandings of multiplication to multiply a fraction by a whole number.	<b>SE/TE:</b> Topic 13: 328-329, 330-331, 332-333  <b>TE:</b> Topic 13: 328A-329B, 330A-331B, 332A-333B
[4.NF.B.4.a] Understand a fraction $a/b$ as a multiple of $1/b$ .	<b>SE/TE:</b> Topic 13: 328-329, 330-331, 354-355  <b>TE:</b> Topic 13: 328A-329B, 330A-331B, 354A-355B
[4.NF.B.4.b] Understand a multiple of $a/b$ as a multiple of $1/b$ , and use this understanding to multiply a fraction by a whole number.	<b>SE/TE:</b> Topic 13: 330-331, 332-333, 354-355  <b>TE:</b> Topic 13: 330A-331B, 332A-333B
[4.NF.B.4.c] Solve word problems involving multiplication of a fraction by a whole number, e.g., by using visual fraction models and equations to represent the problem.	<b>SE/TE:</b> Topic 13: 330-331, 332-333, 354-355  <b>TE:</b> Topic 13: 330A-331B, 332A-333B
<b>Understand decimal notation for fractions, and compare decimal fractions.</b>	
[4.NF.C.5] Express a fraction with denominator 10 as an equivalent fraction with denominator 100, and use this technique to add two fractions with respective denominators 10 and 100.	<b>SE/TE:</b> Topic 13: 336-339, 340-343, 354-355  <b>TE:</b> Topic 13: 336A-339B, 340A-343B
[4.NF.C.6] Use decimal notation for fractions with denominators 10 or 100.	<b>SE/TE:</b> Topic 13: 334-335, 336-339, 340-343, 344-345, 354-355, 356-357  <b>TE:</b> Topic 13: 334A-335B, 336A-339B, 340A-343B, 344A-345B
[4.NF.C.7] Compare two decimals to hundredths by reasoning about their size. Recognize that comparisons are valid only when the two decimals refer to the same whole. Record the results of comparisons with the symbols $>$ , $=$ , or $<$ , and justify the conclusions, e.g., by using a visual model.	<b>SE/TE:</b> Topic 13: 346-349, 356-357  <b>TE:</b> Topic 13: 346A-349B

**A Correlation of *enVisionMATH* Common Core Tennessee, ©2015  
to the TNCore Common Core State Standards for Mathematics – Grade 4**

TNCore Common Core State Standards for Mathematics Grade 4	enVisionMATH Common Core Tennessee ©2015
<b>Measurement and Data</b>	
<b>Solve problems involving measurement and conversion of measurements from a larger unit to a smaller unit.</b>	
[4.MD.A.1] Know relative sizes of measurement units within one system of units including km, m, cm; kg, g; lb, oz.; l, ml; hr, min, sec. Within a single system of measurement, express measurements in a larger unit in terms of a smaller unit. Record measurement equivalents in a two-column table.	<b>SE/TE:</b> Topic 14: 364-365, 366-367, 368-369, 370-373, 374-375, 376-377, 378-379, 380-381, 382-385, 386-387, 388-389, 390-391, 392-393  <b>TE:</b> Topic 14: 364A-365B, 366A-367B, 368A-369B, 370A-373B, 374A-375B, 376A-377B, 378A-379B, 380A-381B, 382A-385B, 386A-387B, 388A-389B
[4.MD.A.2] Use the four operations to solve word problems involving distances, intervals of time, liquid volumes, masses of objects, and money, including problems involving simple fractions or decimals, and problems that require expressing measurements given in a larger unit in terms of a smaller unit. Represent measurement quantities using diagrams such as number line diagrams that feature a measurement scale.	<b>SE/TE:</b> Topic 13: 350-351, 352-353, 356-357; Topic 14: 366-367, 370-373, 374-375, 378-379, 380-381, 382-385, 386-387, 388-389, 390-391, 392-393; Topic 15: 406-407, 408-409, 410-413, 414-415, 416-417  <b>TE:</b> Topic 13: 350A-351B, 352A-353B; Topic 14: 366A-367B, 370A-373B, 374A-375B, 378A-379B, 380A-381B, 382A-385B, 386A-387B, 388A-389B; Topic 15: 406A-407B, 408A-409B, 410A-413B
[4.MD.A.3] Apply the area and perimeter formulas for rectangles in real world and mathematical problems.	<b>SE/TE:</b> Topic 15: 404-405, 414-415, 416-417  <b>TE:</b> Topic 15: 404A-405B
<b>Represent and interpret data.</b>	
[4.MD.B.4] Make a line plot to display a data set of measurements in fractions of a unit ( $\frac{1}{2}$ , $\frac{1}{4}$ , $\frac{1}{8}$ ). Solve problems involving addition and subtraction of fractions by using information presented in line plots.	<b>SE/TE:</b> Topic 15: 400-401, 402-403, 414-415, 416-417  <b>TE:</b> Topic 15: 400A-401B, 402A-403B
<b>Geometric measurement: understand concepts of angle and measure angles.</b>	
[4.MD.C.5] Recognize angles as geometric shapes that are formed wherever two rays share a common endpoint, and understand concepts of angle measurement:	<b>SE/TE:</b> Topic 16: 426-427, 428-429  <b>TE:</b> Topic 16: 426A-427B, 248A-429B

**A Correlation of *enVisionMATH* Common Core Tennessee, ©2015  
to the TNCore Common Core State Standards for Mathematics – Grade 4**

TNCore Common Core State Standards for Mathematics Grade 4	enVisionMATH Common Core Tennessee ©2015
[4.MD.C.5.a]An angle is measured with reference to a circle with its center at the common endpoint of the rays, by considering the fraction of the circular arc between the points where the two rays intersect the circle. An angle that turns through $\frac{1}{360}$ of a circle is called a “one-degree angle,” and can be used to measure angles.	<b>SE/TE:</b> Topic 16: 426-427, 428-429, 430-431, 432-433, 444-445  <b>TE:</b> Topic 16: 426A-427B, 428A-429B, 430A-431B, 432A-433B
[4.MD.C.5.b]An angle that turns through $n$ one-degree angles is said to have an angle measure of $n$ degrees.	<b>SE/TE:</b> Topic 16: 428-429, 430-433, 432-433, 444-445  <b>TE:</b> Topic 16: 428A-429B, 430A-431B, 432A-433B
[4.MD.C.6]Measure angles in whole-number degrees using a protractor. Sketch angles of specified measure.	<b>SE/TE:</b> Topic 16: 430-431, 432-433, 444-445  <b>TE:</b> Topic 16: 430A-431B, 432A-433B
[4.MD.C.7]Recognize angle measure as additive. When an angle is decomposed into non-overlapping parts, the angle measure of the whole is the sum of the angle measures of the parts. Solve addition and subtraction problems to find unknown angles on a diagram in real world and mathematical problems, e.g., by using an equation with a symbol for the unknown angle measure.	<b>SE/TE:</b> Topic 16: 432-433, 446-447  <b>TE:</b> Topic 16: 432A-433B
<b>Geometry</b>	
<b>Draw and identify lines and angles, and classify shapes by properties of their lines and angles.</b>	
[4.G.A.1]Draw points, lines, line segments, rays, angles (right, acute, obtuse), and perpendicular and parallel lines. Identify these in two-dimensional figures.	<b>SE/TE:</b> Topic 16: 422-423, 424-425, 426-427, 428-429, 430-431, 436-437, 438-439, 444-445, 446-447  <b>TE:</b> Topic 16: 422A-423B, 424A-425B, 426A-427B, 428A-429B, 430A-431B, 436A-437B, 438A-439B



**A Correlation of *enVisionMATH* Common Core Tennessee, ©2015  
to the TNCore Common Core State Standards for Mathematics – Grade 4**

<p align="center"><b>TNCore Common Core State Standards for Mathematics Grade 4</b></p>	<p align="center"><b>enVisionMATH Common Core Tennessee ©2015</b></p>
<p>[4.G.A.2]Classify two-dimensional figures based on the presence or absence of parallel or perpendicular lines, or the presence or absence of angles of a specified size. Recognize right triangles as a category, and identify right triangles.</p>	<p><b>SE/TE:</b> Topic 16: 434-435, 436-437, 438-439, 442-443, 446-447</p> <p><b>TE:</b> Topic 16: 434A-435B, 436A-437B, 438A-439B, 442A-443B</p>
<p>[4.G.A.3]Recognize a line of symmetry for a two-dimensional figure as a line across the figure such that the figure can be folded along the line into matching parts. Identify line-symmetric figures and draw lines of symmetry.</p>	<p><b>SE/TE:</b> Topic 16: 440-441, 446-447</p> <p><b>TE:</b> Topic 16: 440A-441B</p>