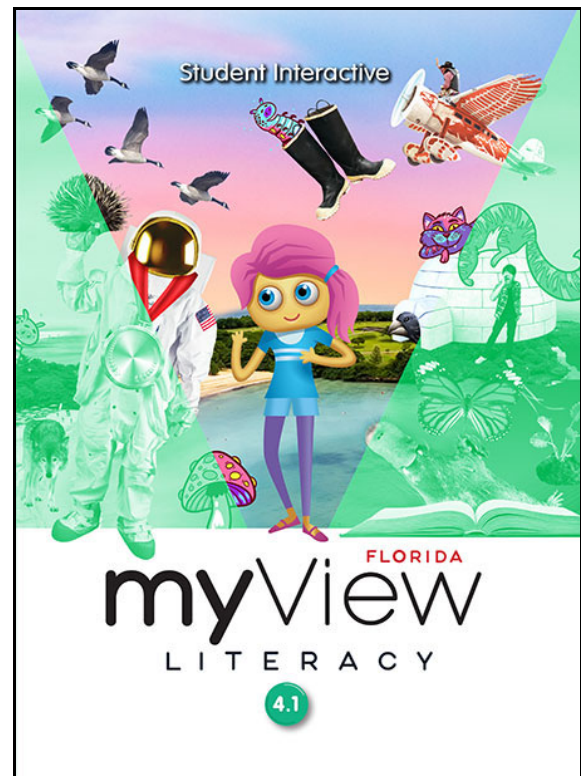


An Alignment of

**Words Their Way Classroom  
©2019**



To

**Florida myView Literacy  
Word Work and Spelling Lessons  
Grade 4, ©2022**

**A Correlation of Words Their Way Classroom ©2019  
To Florida myView Literacy ©2022 Word Work and Spelling Lessons  
Grade 4**

**Introduction**

This document demonstrates how **Words Their Way Classroom ©2019** works together with **Florida myView Literacy ©2022: Word Work and Spelling Lessons**. Correlation references are to the Words Their Way Classroom Teacher’s Resource Guide and are cited by Level title, Sort name, number and page number. Words Their Way Classroom Sorts can be reinforced online with enhanced digital support available through Realize.

**Words Their Way (WTW) Classroom** is the classroom-ready version of Words Their Way: Word Study for Phonics, Vocabulary and Spelling Instruction professional development book. Words Their Way Classroom uses the research-based developmental approach to word study that is student-centered and assessment driven. This approach fosters the progression of word knowledge, including the development of phonics, spelling, word recognition, and vocabulary. The Classroom ready-made materials make word study easy to implement and use in the classroom.

**myView Literacy** is a K-5 comprehensive, interactive literacy program that provides a balanced approach to teaching reading, writing, speaking, listening and viewing using a collection authentic reading texts and collaborative writing workshops. Competencies of 21st century thinking and social-emotional learning are taught and practiced using authentic literature, highly-engaging trade books, collaborative learning, and project-based inquiry. The instructional model follows connected reading and writing workshops that focus on teaching the critical skills and strategies students need to be highly competent thinkers, readers, and writers ready for college and career. It is designed to teach students to think carefully about what they read, discern what is relevant to them, and what is important in their world. myView Literacy offers a balanced instructional model with an emphasis on conceptual understandings, standards-based instruction and application through rigorous performance tasks and the workshop model.

**A Correlation of Words Their Way Classroom ©2019  
To Florida myView Literacy ©2022 Word Work and Spelling Lessons  
Grade 4**

**Table of Contents**

<b>UNIT 1</b> .....	<b>4</b>
<b>UNIT 2</b> .....	<b>7</b>
<b>UNIT 3</b> .....	<b>9</b>
<b>UNIT 4</b> .....	<b>14</b>
<b>UNIT 5</b> .....	<b>16</b>

**A Correlation of Words Their Way Classroom ©2019  
To Florida myView Literacy ©2022 Word Work and Spelling Lessons  
Grade 4**

Florida myView Literacy Word Work and Spelling Lessons Grade 4	Words Their Way Classroom ©2019
<b>UNIT 1</b>	
Reading-Writing Bridge: Word Study T64-T65	
Lessons 1-5: Suffixes -ed, -ing, -s, -er, -est T64-T65	<b>Syllables and Affixes</b> Sort 3: Adding -ing Words with VCe and VVC patterns, pp. 428-430 Sort 4: Adding -ed (Double/e-Drop/No Change), pp. 431-433 Sort 6: Plural endings -es, -s, pp. 437-439 Sort 8: -y + Inflected endings, pp. 443-445 Sort 50: Comparatives -er, -est, pp. 569-571
Reading-Writing Bridge: Spelling T70-T71	
Lessons 1-5: Spelling: Spell Words with Suffixes T70-T71	<b>Syllables and Affixes</b> Sort 3: Adding -ing Words with VCe and VVC patterns, pp. 428-430 Sort 4: Adding -ed (Double/e-Drop/No Change), pp. 431-433 Sort 6: Plural endings -es, -s, pp. 437-439 Sort 8: -y + Inflected endings, pp. 443-445 Sort 50: Comparatives -er, -est, pp. 569-571
Reading-Writing Bridge: Word Study T130-T131	
Word Study: Lessons 1-3, 5 :Word Study: Suffixes -ty, -ity, -ic, -ment T130-T131	<b>Derivational Relations</b> Sort 1: Suffixes -ment, -less, -ness, pp. 588-590 Sort 5: Suffixes -al, -ial, -ic, pp. 600-602 Sort 15: Adding Suffix -ity: Vowel Alternation (/ə/ to Short), pp. 630-632
Word Study: Lesson 4: Suffixes -ed, -ing, -s, -er, -est T131	<b>Syllables and Affixes</b> Sort 3: Adding -ing Words with VCe and VVC patterns, pp. 428-430 Sort 4: Adding -ed (Double/e-Drop/No Change), pp. 431-433 Sort 6: Plural endings -es, -s, pp. 437-439 Sort 8: -y + Inflected endings, pp. 443-445 Sort 50: Comparatives -er, -est, pp. 569-571
Reading-Writing Bridge: Spelling T136-T137	
Lessons 1-3, 5: Spelling: Spell Words with -ty, -ity, -ic, -ment T136-T137	<b>Derivational Relations</b> Sort 1: Suffixes -ment, -less, -ness, pp. 588-590 Sort 5: Suffixes -al, -ial, -ic, pp. 600-602 Sort 15: Adding Suffix -ity: Vowel Alternation (/ə/ to Short), pp. 630-632

**A Correlation of Words Their Way Classroom ©2019  
To Florida myView Literacy ©2022 Word Work and Spelling Lessons  
Grade 4**

<b>Florida myView Literacy Word Work and Spelling Lessons Grade 4</b>	<b>Words Their Way Classroom ©2019</b>
Lesson 4: Suffixes -ed, -ing, -s, -er, -est T137	<b>Syllables and Affixes</b> Sort 3: Adding –ing Words with VCe and VVC patterns, pp. 428-430 Sort 4: Adding –ed (Double/e-Drop/No Change), pp. 431-433 Sort 6: Plural endings –es, -s, pp. 437-439 Sort 8: -y + Inflected endings, pp. 443-445 Sort 50: Comparatives –er, -est, pp. 569-571
Reading-Writing Bridge: Word Study T194-T195	
Word Study: Lessons 1-3, 5: Syllable Pattern VCe T194-T195	<b>Syllables and Affixes</b> Sort 17: Long i Patterns in Accented Syllables, pp. 470-472 Sort 18: Long o Patterns in Accented Syllables, pp. 473-475 Sort 19: Long u Patterns oo, u_e in Accented Syllables, pp. 476-478 Sort 20: Review Long Vowel Patterns in Accented Syllables, pp. 482-484
Lesson 4: Suffixes -ty, -ity, -ic, -ment T195	<b>Derivational Relations</b> Sort 1: Suffixes –ment, -less, -ness, pp. 588-590 Sort 5: Suffixes –al, -ial, -ic, pp. 600-602 Sort 15: Adding Suffix –ity: Vowel Alternation (/ə/ to Short), pp. 630-632
Reading-Writing Bridge: Spelling T200-T201	
Lessons 1-3, 5: Spelling: Spell Words with the VCe Pattern T200-T201	<b>Syllables and Affixes</b> Sort 17: Long i Patterns in Accented Syllables, pp. 470-472 Sort 18: Long o Patterns in Accented Syllables, pp. 473-475 Sort 19: Long u Patterns oo, u_e in Accented Syllables, pp. 476-478 Sort 20: Review Long Vowel Patterns in Accented Syllables, pp. 482-484
Lesson 4: Suffixes -ity, -ty, -ic, -ment T201	<b>Derivational Relations</b> Sort 1: Suffixes –ment, -less, -ness, pp. 588-590 Sort 5: Suffixes –al, -ial, -ic, pp. 600-602 Sort 15: Adding Suffix –ity: Vowel Alternation (/ə/ to Short), pp. 630-632

**A Correlation of Words Their Way Classroom ©2019  
To Florida myView Literacy ©2022 Word Work and Spelling Lessons  
Grade 4**

<b>Florida myView Literacy Word Work and Spelling Lessons Grade 4</b>	<b>Words Their Way Classroom ©2019</b>
<b>Reading-Writing Bridge: Word Study T262-T263</b>	
Lessons 1-3, 5: Word Study: Vowel Teams and Digraphs T262-T263	<p><b>Within Word Pattern</b> Sort 16: Review CVVC Patterns ai, oo, ee, ea, oa, pp. 328-330 Sort 17: Short a (CVC) and Long a (CVCe, CVVC-ai, and Open Syllable-ay), pp. 331-333 Sort 18: Long o (CVCe, CVVC-oa, CVV-ow, VCC), pp. 334-336 Sort 31: Vowel Digraph oo, pp. 373-375 Sort 32: Ambiguous Vowels aw, au, pp. 376-378</p>
Lesson 4: Syllable Patterns VCe T263	<p><b>Syllables and Affixes</b> Sort 17: Long i Patterns in Accented Syllables, pp. 470-472 Sort 18: Long o Patterns in Accented Syllables, pp. 473-475 Sort 19: Long u Patterns oo, u_e in Accented Syllables, pp. 476-478 Sort 20: Review Long Vowel Patterns in Accented Syllables, pp. 482-484</p>
<b>Reading-Writing Bridge: Spelling T268-T269</b>	
Lessons 1-3, 5: Spelling: Vowel Teams and Digraphs T268-T269	<p><b>Within Word Pattern</b> Sort 16: Review CVVC Patterns ai, oo, ee, ea, oa, pp. 328-330 Sort 17: Short a (CVC) and Long a (CVCe, CVVC-ai, and Open Syllable-ay), pp. 331-333 Sort 18: Long o (CVCe, CVVC-oa, CVV-ow, VCC), pp. 334-336 Sort 31: Vowel Digraph oo, pp. 373-375 Sort 32: Ambiguous Vowels aw, au, pp. 376-378</p>
Lesson 4: Syllable Pattern VCe T269	<p><b>Syllables and Affixes</b> Sort 17: Long i Patterns in Accented Syllables, pp. 470-472 Sort 18: Long o Patterns in Accented Syllables, pp. 473-475 Sort 19: Long u Patterns oo, u_e in Accented Syllables, pp. 476-478 Sort 20: Review Long Vowel Patterns in Accented Syllables, pp. 482-484</p>
<b>Reading-Writing Bridge: Word Study T340-T341</b>	
Word Study: Lessons 1-3, 5: Prefixes mis-, en-, em- T340-T341	<p><b>Syllables and Affixes</b> Sort 46: Prefixes dis-, mis-, pre, pp. 557-559 <b>Derivational Relations</b> Sort 2: Prefixes un-, in-, dis, mis, pp. 591-593</p>

**A Correlation of Words Their Way Classroom ©2019  
To Florida myView Literacy ©2022 Word Work and Spelling Lessons  
Grade 4**

<b>Florida myView Literacy Word Work and Spelling Lessons Grade 4</b>	<b>Words Their Way Classroom ©2019</b>
Word Study: Lesson 4: Vowel Team and Digraphs T341	<b>Within Word Pattern</b> Sort 16: Review CVVC Patterns ai, oo, ee, ea, oa, pp. 328-330 Sort 17: Short a (CVC) and Long a (CVCe, CVVC-ai, and Open Syllable-ay), pp. 331-333 Sort 18: Long o (CVCe, CVVC-oa, CVV-ow, VCC), pp. 334-336 Sort 31: Vowel Digraph oo, pp. 373-375 Sort 32: Ambiguous Vowels aw, au, pp. 376-378
Reading-Writing Bridge: Spelling T346-T347	
Lessons 1-3, 5: Spelling: Spell Words with Prefixes T346-T347	<b>Syllables and Affixes</b> Sort 46: Prefixes dis-, mis-, pre, pp. 557-559 <b>Derivational Relations</b> Sort 2: Prefixes un-, in-, dis, mis, pp. 591-593
Lesson 4: Vowel Teams and Digraphs T347	<b>Within Word Pattern</b> Sort 16: Review CVVC Patterns ai, oo, ee, ea, oa, pp. 328-330 Sort 17: Short a (CVC) and Long a (CVCe, CVVC-ai, and Open Syllable-ay), pp. 331-333 Sort 18: Long o (CVCe, CVVC-oa, CVV-ow, VCC), pp. 334-336 Sort 31: Vowel Digraph oo, pp. 373-375 Sort 32: Ambiguous Vowels aw, au, pp. 376-378
<b>UNIT 2</b>	
Reading-Writing Bridge: Word Study: Plurals T68-T69	
Word Study: Lessons 1-3, 5: Plurals T68-T69	<b>Syllables and Affixes</b> Sort 6: Plural endings –es, -s, pp. 437-439 Sort 7: Unusual Plurals, pp. 440-442
Word Study: Lesson 4: Prefixes mis-, en-, em- T69	<b>Syllables and Affixes</b> Sort 46: Prefixes dis-, mis-, pre, pp. 557-559 <b>Derivational Relations</b> Sort 2: Prefixes un-, in-, dis, mis, pp. 591-593
Reading-Writing Bridge: Spelling T74-T75	
Lessons 1-3, 5: Spelling: Spell Plurals T74-T75	<b>Syllables and Affixes</b> Sort 6: Plural endings –es, -s, pp. 437-439 Sort 7: Unusual Plurals, pp. 440-442
Lesson 4: Prefixes mis-, en-, em- T75	<b>Syllables and Affixes</b> Sort 46: Prefixes dis-, mis-, pre, pp. 557-559 <b>Derivational Relations</b> Sort 2: Prefixes un-, in-, dis, mis, pp. 591-593

**A Correlation of Words Their Way Classroom ©2019  
To Florida myView Literacy ©2022 Word Work and Spelling Lessons  
Grade 4**

<b>Florida myView Literacy Word Work and Spelling Lessons Grade 4</b>	<b>Words Their Way Classroom ©2019</b>
<b>Reading-Writing Bridge: Word Study T142-T143</b>	
Word Study: Lessons 1-3, 5: Vowel Diphthongs T142-T143	<b>Within Word Pattern</b> Sort 30: Diphthongs oi, oy, pp. 370-372 Sort 34: Diphthongs ou, ow, pp. 382-384
Word Study: Lesson 4: Plurals T143	<b>Syllables and Affixes</b> Sort 6: Plural endings –es, -s, pp. 437-439 Sort 7: Unusual Plurals, pp. 440-442
<b>Reading-Writing Bridge: Spelling T148-T149</b>	
Lessons 1-3, 5: Spelling: Vowel Diphthongs T148-T149	<b>Within Word Pattern</b> Sort 30: Diphthongs oi, oy, pp. 370-372 Sort 34: Diphthongs ou, ow, pp. 382-384
Lesson 4: Plurals T149	<b>Syllables and Affixes</b> Sort 6: Plural endings –es, -s, pp. 437-439 Sort 7: Unusual Plurals, pp. 440-442
<b>Reading-Writing Bridge: Word Study T206-T207</b>	
Word Study: Lessons 1-3, 5: Irregular Plurals T206-T207	<b>Syllables and Affixes</b> Sort 7: Unusual Plurals, pp. 440-442
Word Study: Lesson 4: Vowel Diphthongs T207	<b>Within Word Pattern</b> Sort 30: Diphthongs oi, oy, pp. 370-372 Sort 34: Diphthongs ou, ow, pp. 382-384
<b>Reading-Writing Bridge: Spelling T212-T213</b>	
Lessons 1-3, 5: Spelling: Spell Irregular Plurals T212-T213	<b>Syllables and Affixes</b> Sort 7: Unusual Plurals, pp. 440-442
Lesson 4: Diphthongs ou, ow, oi, oy T213	<b>Within Word Pattern</b> Sort 30: Diphthongs oi, oy, pp. 370-372 Sort 34: Diphthongs ou, ow, pp. 382-384
<b>Reading-Writing Bridge: Word Study T272-T273</b>	
Word Study: Lessons 1-3, 5: Greek Roots T272-T273	<b>Derivational Relations</b> Sort 14: Greek Word Parts tele-, phon-, photo-, -graph-, pp. 627-629
Word Study: Lesson 4: Irregular Plurals T273	<b>Syllables and Affixes</b> Sort 7: Unusual Plurals, pp. 440-442
<b>Reading-Writing Bridge: Spelling T278-T279</b>	
Lessons 1-3, 5: Spelling: Spell Words with Greek Roots T278-T279	<b>Derivational Relations</b> Sort 14: Greek Word Parts tele-, phon-, photo-, -graph-, pp. 627-629
Lesson 4: Irregular Plurals T279	<b>Syllables and Affixes</b> Sort 7: Unusual Plurals, pp. 440-442



**A Correlation of Words Their Way Classroom ©2019  
To Florida myView Literacy ©2022 Word Work and Spelling Lessons  
Grade 4**

<b>Florida myView Literacy Word Work and Spelling Lessons Grade 4</b>	<b>Words Their Way Classroom ©2019</b>
<b>Reading-Writing Bridge: Word Study T342-T343</b>	
Word Study: Lessons 1-3, 5: Latin Roots terr, rupt, tract, aqua, dict T342-T343	<b>Derivational Relations</b> Sort 18: Latin Word Roots gress, rupt, tract, mot, pp. 639-641
Word Study: Lesson 4: Greek Roots bio, phon, scope, graph, meter, tele T343	<b>Derivational Relations</b> Sort 14: Greek Word Parts tele-, phon-, photo-, -graph-, pp. 627-629
<b>Reading-Writing Bridge: Spelling T348-T349</b>	
Lessons 1-3, 5: Spelling: Spell Words with Latin Roots terr, rupt, tract, aqua, dict T348-T349	<b>Derivational Relations</b> Sort 18: Latin Word Roots gress, rupt, tract, mot, pp. 639-641
Lesson 4: Greek Roots bio, phon, scope, graph, meter, tele T349	<b>Derivational Relations</b> Sort 14: Greek Word Parts tele-, phon-, photo-, -graph-, pp. 627-629
<b>UNIT 3</b>	
<b>Reading-Writing Bridge: Word Study T56-T57</b>	
Word Study: Lessons 1-3, 5: Related Words T56-T57	<b>Derivational Relations</b> Sort 15: Adding Suffix –ity: Vowel Alternation (/ə/ to Short), pp. 630-632 Sort 16: Adding Suffixes: Vowel Alternation (With Spelling Change), pp. 633-635 Sort 17: Adding the Suffix-ation: Vowel Alternation (With Spelling Changes), pp. 636-638
Word Study: Lesson 4: Greek Roots bio, phon, scope, graph, meter, tele T57	<b>Derivational Relations</b> Sort 14: Greek Word Parts tele-, phon-, photo-, -graph-, pp. 627-629
<b>Reading-Writing Bridge: Spelling T62-T63</b>	
Lessons 1-3, 5: Spelling: Spell Related Words T62-T63	<b>Derivational Relations</b> Sort 15: Adding Suffix –ity: Vowel Alternation (/ə/ to Short), pp. 630-632 Sort 16: Adding Suffixes: Vowel Alternation (With Spelling Change), pp. 633-635 Sort 17: Adding the Suffix-ation: Vowel Alternation (With Spelling Changes), pp. 636-638
Lesson 4: Words with Latin Roots T63	<b>Derivational Relations</b> Sort 18: Latin Word Roots gress, rupt, tract, mot, pp. 639-641

**A Correlation of Words Their Way Classroom ©2019  
To Florida myView Literacy ©2022 Word Work and Spelling Lessons  
Grade 4**

<b>Florida myView Literacy Word Work and Spelling Lessons Grade 4</b>	<b>Words Their Way Classroom ©2019</b>
<b>Reading-Writing Bridge: Word Study T122-T123</b>	
Word Study: Lessons 1-3, 5: r-Controlled Vowels T122-T123	<p><b>Within Word Pattern</b></p> <p>Sort 24: r-Influenced Vowel Patterns ar, are, air, pp. 352-354</p> <p>Sort 25: r-Influenced Vowel Patterns er, ear, eer, pp. 355-357</p> <p>Sort 26: r-Influenced Vowel Patterns ir, ire, ier, pp. 358-360</p> <p>Sort 27: r-Influenced Vowel Patterns or, ore, oar, pp. 361-363</p> <p>Sort 28: r-Influenced Vowel Patterns ur, ure, ur-e, pp. 364-366</p>
Word Study: Lesson 4: Related Words T123	<p><b>Derivational Relations</b></p> <p>Sort 15: Adding Suffix –ity: Vowel Alternation (/ə/ to Short), pp. 630-632</p> <p>Sort 16: Adding Suffixes: Vowel Alternation (With Spelling Change), pp. 633-635</p> <p>Sort 17: Adding the Suffix-ation: Vowel Alternation (With Spelling Changes), pp. 636-638</p>
<b>Reading-Writing Bridge: Spelling T128-T129</b>	
Lessons 1-3, 5: Spelling: r-Controlled Vowels T128-T129	<p><b>Within Word Pattern</b></p> <p>Sort 24: r-Influenced Vowel Patterns ar, are, air, pp. 352-354</p> <p>Sort 25: r-Influenced Vowel Patterns er, ear, eer, pp. 355-357</p> <p>Sort 26: r-Influenced Vowel Patterns ir, ire, ier, pp. 358-360</p> <p>Sort 27: r-Influenced Vowel Patterns or, ore, oar, 361-363</p> <p>Sort 28: r-Influenced Vowel Patterns ur, ure, ur-e, pp. 364-366</p>
Lesson 4: Related Words T129	<p><b>Derivational Relations</b></p> <p>Sort 15: Adding Suffix –ity: Vowel Alternation (/ə/ to Short), pp. 630-632</p> <p>Sort 16: Adding Suffixes: Vowel Alternation (With Spelling Change), pp. 633-635</p> <p>Sort 17: Adding the Suffix-ation: Vowel Alternation (With Spelling Changes), pp. 636-638</p>

**A Correlation of Words Their Way Classroom ©2019  
To Florida myView Literacy ©2022 Word Work and Spelling Lessons  
Grade 4**

<b>Florida myView Literacy Word Work and Spelling Lessons Grade 4</b>	<b>Words Their Way Classroom ©2019</b>
<b>Reading-Writing Bridge: Word Study T194-T195</b>	
Word Study: Lessons 1-3, 5: Final Stable Syllables T194-T195	<b>Syllables and Affixes</b> Sort 29: Unaccented Final Syllable –le, pp. 506-508 Sort 30: Unaccented Final Syllable /ə/ Spelled –le, -el, -il, -al, pp. 509-511 Sort 33: Final Syllable /ər/ Spelled –cher, -ture, -sure, -ure, pp. 518-520
Word Study: Lesson 4: r-Controlled Vowels T195	<b>Within Word Pattern</b> Sort 24: r-Influenced Vowel Patterns ar, are, air, pp. 352-354 Sort 25: r-Influenced Vowel Patterns er, ear, eer, pp. 355-357 Sort 26: r-Influenced Vowel Patterns ir, ire, ier, pp. 358-360 Sort 27: r-Influenced Vowel Patterns or, ore, oar, pp. 361-363 Sort 28: r-Influenced Vowel Patterns ur, ure, ur-e, pp. 364-366
<b>Reading-Writing Bridge: Spelling T200-T201</b>	
Lessons 1-3, 5: Spelling: Spell Multisyllabic Words T200-T201	<b>Syllables and Affixes</b> Sort 29: Unaccented Final Syllable –le, pp. 506-508 Sort 30: Unaccented Final Syllable /ə/ Spelled –le, -el, -il, -al, pp. 509-511 <b>Derivational Relations</b> Sort 6: Adding –ion to Base Words, No Spelling Change, pp. 603-605 Sort 7: Adding –ion and –ian (With No Spelling Change), pp. 606-608 Sort 8: Adding –ion (With e-Drop and Spelling Change), pp. 609-611
Lesson 4: r-Controlled Vowels T201	<b>Within Word Pattern</b> Sort 24: r-Influenced Vowel Patterns ar, are, air, pp. 352-354 Sort 25: r-Influenced Vowel Patterns er, ear, eer, pp. 355-357 Sort 26: r-Influenced Vowel Patterns ir, ire, ier, pp. 358-360 Sort 27: r-Influenced Vowel Patterns or, ore, oar, pp. 361-363 Sort 28: r-Influenced Vowel Patterns ur, ure, ur-e, pp. 364-366

**A Correlation of Words Their Way Classroom ©2019  
To Florida myView Literacy ©2022 Word Work and Spelling Lessons  
Grade 4**

<b>Florida myView Literacy Word Work and Spelling Lessons Grade 4</b>	<b>Words Their Way Classroom ©2019</b>
<b>Reading-Writing Bridge: Word Study T274-T275</b>	
Word Study: Lessons 1-3, 5: Syllable Patterns V/CV and VC/V T274-T275	<b>Syllables and Affixes</b> Sort 12: Syllable Juncture in VCV and VCCV Patterns, pp. 455-457 Sort 13: Syllable Juncture in VCV and VVCV Patterns, pp. 458-460 Sort 16: Adding Suffixes: Vowel Alternation (With Spelling Change), pp. 633-635 Sort 17: Adding the Suffix-ation: Vowel Alternation (With Spelling Changes), pp. 636-638
Word Study: Lesson 4: Final Stable Syllables T275	<b>Syllables and Affixes</b> Sort 29: Unaccented Final Syllable –le, pp. 506-508 Sort 30: Unaccented Final Syllable /ə/ Spelled –le, -el, -il, -al, pp. 509-511 Sort 33: Final Syllable /ər/ Spelled –cher, -ture, -sure, -ure, pp. 518-520
<b>Reading-Writing Bridge: Spelling T280-T281</b>	
Lessons 1-3, 5: Spelling: Spell V/CV and VC/V Words T280-T281	<b>Syllables and Affixes</b> Sort 12: Syllable Juncture in VCV and VCCV Patterns, pp. 455-457 Sort 13: Syllable Juncture in VCV and VVCV Patterns, pp. 458-460 Sort 16: Long a Patterns in Accented Syllables, pp. 467-469 Sort 18: Long o Patterns in Accented Syllables, pp. 473-475
Lesson 4: Final Stable Syllables T281	<b>Syllables and Affixes</b> Sort 29: Unaccented Final Syllable –le, pp. 506-508 Sort 30: Unaccented Final Syllable /ə/ Spelled –le, -el, -il, -al, pp. 509-511 Sort 33: Final Syllable /ər/ Spelled –cher, -ture, -sure, -ure, pp. 518-520

**A Correlation of Words Their Way Classroom ©2019  
To Florida myView Literacy ©2022 Word Work and Spelling Lessons  
Grade 4**

<b>Florida myView Literacy Word Work and Spelling Lessons Grade 4</b>	<b>Words Their Way Classroom ©2019</b>
<b>Reading-Writing Bridge: Word Study T334-T335</b>	
Word Study: Lessons 1-3, 5: Silent Letters T334-T335	<p><b>Within Word Patterns</b> Sort 21: Short i (CVC) and Long i (CVCe, VCC-igh, CV Open Syllable-y), pp. 343-345 Sort 35: Silent Beginning Consonants kn-, wr-, gn-, pp. 385-387 Sort 43: Words with Silent Consonants, pp. 548-550</p> <p><b>Derivational Relations</b> Sort 9: Consonant Alternation: Silent and Sounded, pp. 612-614</p>
Word Study: Lesson 4: Syllable Patterns V/CV and VC/V T335	<p><b>Syllables and Affixes</b> Sort 12: Syllable Juncture in VCV and VCCV Patterns, pp. 455-457 Sort 13: Syllable Juncture in VCV and VVCV Patterns, pp. 458-460 Sort 16: Long a Patterns in Accented Syllables, pp. 467-469 Sort 18: Long o Patterns in Accented Syllables, pp. 473-475</p>
<b>Reading-Writing Bridge: Spelling T340-T341</b>	
Lessons 1-3, 5: Spelling: Spell Word with Silent Letters T340-T341	<p><b>Within Word Patterns</b> Sort 21: Short i (CVC) and Long i (CVCe, VCC-igh, CV Open Syllable-y), pp. 343-345 Sort 35: Silent Beginning Consonants kn-, wr-, gn-, pp. 385-387 Sort 43: Words with Silent Consonants, pp. 548-550</p> <p><b>Derivational Relations</b> Sort 9: Consonant Alternation: Silent and Sounded, pp. 612-614</p>
Lesson 4: Syllable Patterns V/CV and VC/V T341	<p><b>Syllables and Affixes</b> Sort 12: Syllable Juncture in VCV and VCCV Patterns, pp. 455-457 Sort 13: Syllable Juncture in VCV and VVCV Patterns, pp. 458-460 Sort 16: Long a Patterns in Accented Syllables, pp. 467-469 Sort 18: Long o Patterns in Accented Syllables, pp. 473-475</p>

**A Correlation of Words Their Way Classroom ©2019  
To Florida myView Literacy ©2022 Word Work and Spelling Lessons  
Grade 4**

<b>Florida myView Literacy Word Work and Spelling Lessons Grade 4</b>	<b>Words Their Way Classroom ©2019</b>
<b>UNIT 4</b>	
Reading-Writing Bridge: Word Study T66-T67	
Word Study: Lessons 1-3, 5: Greek and Latin Prefixes T66-T67	<b>Derivational Relations</b> Sort 22: Latin Prefixes intra-, inter-, intro-, circum, pp. 651-653 Sort 26: Prefix Assimilation: in-, pp. 663-665 Sort 28: Number Prefixes mono-, uni-, bi-, tri-, pp. 669-671 Sort 29: Number Prefixes quadr-, quint-, pent-, oct-, cent-, pp. 672-674 Sort 38: Prefix Assimilation com-, col-, con-; ad-, ob-, sub-, pp. 699-701
Word Study: Lesson 4: Silent Letters T67	<b>Within Word Patterns</b> Sort 21: Short i (CVC) and Long i (CVCe, VCC-igh, CV Open Syllable-y), pp. 343-345 Sort 35: Silent Beginning Consonants kn-, wr-, gn-, pp. 385-387 Sort 43: Words with Silent Consonants, pp. 548-550 <b>Derivational Relations</b> Sort 9: Consonant Alternation: Silent and Sounded, pp. 612-614
Reading-Writing Bridge: Spelling T72-T73	
Lessons 1-3, 5: Spelling: Spell Greek and Latin Prefixes T72-T73	<b>Derivational Relations</b> Sort 22: Latin Prefixes intra-, inter-, intro-, circum, pp. 651-653 Sort 26: Prefix Assimilation: in-, pp. 663-665 Sort 28: Number Prefixes mono-, uni-, bi-, tri-, pp. 669-671 Sort 29: Number Prefixes quadr-, quint-, pent-, oct-, cent-, pp. 672-674 Sort 38: Prefix Assimilation com-, col-, con-; ad-, ob-, sub-, pp. 699-701
Lesson 4: Silent Letters T73	<b>Within Word Patterns</b> Sort 21: Short i (CVC) and Long i (CVCe, VCC-igh, CV Open Syllable-y), pp. 343-345 Sort 35: Silent Beginning Consonants kn-, wr-, gn-, pp. 385-387 Sort 43: Words with Silent Consonants, pp. 548-550 <b>Derivational Relations</b> Sort 9: Consonant Alternation: Silent and Sounded, pp. 612-614

**A Correlation of Words Their Way Classroom ©2019  
To Florida myView Literacy ©2022 Word Work and Spelling Lessons  
Grade 4**

<b>Florida myView Literacy Word Work and Spelling Lessons Grade 4</b>	<b>Words Their Way Classroom ©2019</b>
<b>Reading-Writing Bridge: Word Study T134-T135</b>	
Word Study: Lessons 1-3, 5: Suffixes -able, -ible T134-T135	<b>Derivational Relations</b> Sort 24: Adding Suffixes –able, ible, pp. 657-659 Sort 25: Adding –able and –ible (eDrop, y to i), pp. 660-662
Word Study: Lesson 4: Greek and Latin Prefixes T135	<b>Derivational Relations</b> Sort 22: Latin Prefixes intra-, inter-, intro-, circum, pp. 651-653 Sort 26: Prefix Assimilation: in-, pp. 633-665 Sort 28: Number Prefixes mono-, uni-, bi-, tri-, pp. 669-671 Sort 29: Number Prefixes quadr-, quint-, pent-, oct-, cent-, pp. 672-674 Sort 38: Prefix Assimilation com-, col-, con-; ad-, ob-, sub-, pp. 699-701
<b>Reading-Writing Bridge: Spelling T140-T141</b>	
Lessons 1-3, 5: Spelling: Spell Suffixes -able, -ible T140-T141	<b>Derivational Relations</b> Sort 24: Adding Suffixes –able, ible, pp. 657-659 Sort 25: Adding –able and –ible (eDrop, y to i), pp. 660-662
Lesson 4: Greek and Latin Prefixes T141	<b>Derivational Relations</b> Sort 22: Latin Prefixes intra-, inter-, intro-, circum, pp. 651-653 Sort 26: Prefix Assimilation: in-, pp. 506-508 Sort 28: Number Prefixes mono-, uni-, bi-, tri-, pp. 669-671 Sort 29: Number Prefixes quadr-, quint-, pent-, oct-, cent-, pp. 672-674 Sort 38: Prefix Assimilation com-, col-, con-; ad-, ob-, sub-, pp. 699-701
<b>Reading-Writing Bridge: Word Study T202-T203</b>	
Word Study: Lessons 1-3, 5: Syllable Pattern VV T202-T203	<b>Syllables and Affixes</b> Sort 14: Syllable Juncture in VCCCV and VV Patterns, pp. 461-463
Word Study: Lesson 4: Suffixes -able, -ible T203	<b>Derivational Relations</b> Sort 24: Adding Suffixes –able, ible, pp. 657-659 Sort 25: Adding –able and –ible (eDrop, y to i), pp. 660-662
<b>Reading-Writing Bridge: Spelling T208-T209</b>	
Lessons 1-3, 5: Spelling: Spell Syllable Pattern VV T208-T209	<b>Syllables and Affixes</b> Sort 14: Syllable Juncture in VCCCV and VV Patterns, pp. 461-463

**A Correlation of Words Their Way Classroom ©2019  
To Florida myView Literacy ©2022 Word Work and Spelling Lessons  
Grade 4**

<b>Florida myView Literacy Word Work and Spelling Lessons Grade 4</b>	<b>Words Their Way Classroom ©2019</b>
Lesson 4: Suffixes -able, -ible T209	<b>Derivational Relations</b> Sort 24: Adding Suffixes –able, ible, pp. 657-659 Sort 25: Adding –able and –ible (eDrop, y to i), pp. 660-662
<b>Reading-Writing Bridge: Word Study T274-T275</b>	
Word Study: Lessons 1-3, 5: Prefixes im–, in–, ir– T274-T275	<b>Derivational Relations</b> Sort 26: Prefix Assimilation: iin-, pp. 663-665
Word Study: Lesson 4: Syllable Pattern VV T275	<b>Syllables and Affixes</b> Sort 14: Syllable Juncture in VCCCV and VV Patterns, pp. 461-463
<b>Reading-Writing Bridge: Spelling T280-T281</b>	
Lessons 1-3, 5: Spelling: Spell Prefixes im–, in–, ir– T280-T281	<b>Derivational Relations</b> Sort 26: Prefix Assimilation: in-, pp. 663-665
Lesson 4: Syllable Pattern VV T281	<b>Syllables and Affixes</b> Sort 14: Syllable Juncture in VCCCV and VV Patterns, pp. 461-463
<b>Reading-Writing Bridge: Word Study T346-T347</b>	
Word Study: Lessons 1-3, 5: Homophones T346-T347	<b>Within Word Pattern</b> Sort 42: Long a Homophones #1, pp. 406-408 Sort 43: Long a Homophones #2, pp. 409-411 Sort 44: Short and Long i Homophones, pp. 412-414
Word Study: Lesson 4: Prefixes im–, in–, ir– T347	<b>Derivational Relations</b> Sort 26: Prefix Assimilation: iin-, pp. 663-665
<b>Reading-Writing Bridge: Spelling T352-T353</b>	
Lessons 1-3, 5: Spelling: Spell Prefixes im–, in–, ir– T352-T353	<b>Derivational Relations</b> Sort 26: Prefix Assimilation: in-, pp. 663-665
Lesson 4: Prefixes im–, in–, ir– T353	<b>Derivational Relations</b> Sort 26: Prefix Assimilation: iin-, pp. 663-665
<b>UNIT 5</b>	
<b>Reading-Writing Bridge: Word Study T62-T63</b>	
Word Study: Lessons 1-3, 5: Latin Roots gener, port, dur, ject T62-T63	<b>Derivational Relations</b> Sort 12: Latin Word Roots spect, port, pp. 621-623 Sort 19: Latin Word Roots ject, man, cred, pp. 642-644 Sort 31: Greek and Latin Word Roots gen, mart, onym, pp. 678-680



**A Correlation of Words Their Way Classroom ©2019  
To Florida myView Literacy ©2022 Word Work and Spelling Lessons  
Grade 4**

<b>Florida myView Literacy Word Work and Spelling Lessons Grade 4</b>	<b>Words Their Way Classroom ©2019</b>
Word Study: Lesson 4: Homophones T63	<b>Within Word Pattern</b> Sort 42: Long a Homophones #1, pp. 406-408 Sort 43: Long a Homophones #2, pp. 409-411 Sort 44: Short and Long i Homophones, pp. 412-414
Reading-Writing Bridge: Spelling T68-T69	
Lessons 1-3, 5: Spelling: Spell Latin Roots gener, port, dur, ject T68-T69	<b>Derivational Relations</b> Sort 12: Latin Word Roots spect, port, pp. 621-623 Sort 19: Latin Word Roots ject, man, cred, pp. 642-644 Sort 31: Greek and Latin Word Roots gen, mart, onym, pp. 678-680
Lesson 4: Homophones T69	<b>Within Word Pattern</b> Sort 42: Long a Homophones #1, pp. 406-408 Sort 43: Long a Homophones #2, pp. 409-411 Sort 44: Short and Long i Homophones, pp. 412-414
Reading-Writing Bridge: Word Study T128-T129	
Word Study: Lessons 1-3, 5: Suffixes –en, –ent, –ence T128-T129	<b>Syllables and Affixes</b> Sort 34: Unaccented Final Syllable /ən/ Spelled –en, -on, -an, -ain, pp. 521-523 <b>Derivational Relations</b> Sort 23: Adding Suffixes –ent/ence, ant/-ance, pp. 654-567
Word Study: Lesson 4: Latin Roots gener, port, dur, ject T129	<b>Derivational Relations</b> Sort 12: Latin Word Roots spect, port, pp. 621-623 Sort 19: Latin Word Roots ject, man, cred, pp. 642-644 Sort 31: Greek and Latin Word Roots gen, mart, onym, pp. 678-680
Reading-Writing Bridge: Spelling T134-T135	
Lessons 1-3, 5: Spelling: Spell Words with Suffixes –en, –ent, –ence T134-T135	<b>Syllables and Affixes</b> Sort 34: Unaccented Final Syllable /ən/ Spelled –en, -on, -an, -ain, pp. 521-523 <b>Derivational Relations</b> Sort 23: Adding Suffixes –ent/ence, ant/-ance, pp. 654-567

**A Correlation of Words Their Way Classroom ©2019  
To Florida myView Literacy ©2022 Word Work and Spelling Lessons  
Grade 4**

<b>Florida myView Literacy Word Work and Spelling Lessons Grade 4</b>	<b>Words Their Way Classroom ©2019</b>
Lesson 4: Latin Roots gener, port, dur, ject T135	<b>Derivational Relations</b> Sort 12: Latin Word Roots spect, port, pp. 621-623 Sort 19: Latin Word Roots ject, man, cred, pp. 642-644 Sort 31: Greek and Latin Word Roots gen, mart, onym, pp. 678-680
Reading-Writing Bridge: Word Study T202-T203	
Word Study: Lessons 1-3, 5: Syllable Pattern VCCCV T202-T203	<b>Syllables and Affixes</b> Sort 14: Syllable Juncture in VCCCV and VV Patterns, pp. 461-463
Word Study: Lesson 4: Suffixes –en, –ent, –ence T203	<b>Syllables and Affixes</b> Sort 34: Unaccented Final Syllable /ən/ Spelled –en, -on, -an, -ain, pp. 521-523 <b>Derivational Relations</b> Sort 23: Adding Suffixes –ent/ence, ant/-ance, pp. 654-567
Reading-Writing Bridge: Spelling T208-T209	
Lessons 1-3, 5: Spelling: Spell Multisyllabic Words, Pattern VCCCV T208-T209	<b>Syllables and Affixes</b> Sort 14: Syllable Juncture in VCCCV and VV Patterns, pp. 461-463
Lesson 4: Suffixes –en, –ent, –ence T209	<b>Syllables and Affixes</b> Sort 34: Unaccented Final Syllable /ən/ Spelled –en, -on, -an, -ain, pp. 521-523 <b>Derivational Relations</b> Sort 23: Adding Suffixes –ent/ence, ant/-ance, pp. 654-567
Reading-Writing Bridge: Word Study T268-T269	
Word Study: Lessons 1-3, 5: Prefixes dis-, over-, non-, under- T268-T269	<b>Syllables and Affixes</b> Sort 46: Prefixes dis-, mis-, pre, pp. 557-559 Sort 47: Previses ex-, non-, in-, fore-, pp. 560-562 <b>Derivational Relations</b> Sort 2: Prefixes un-, in-, dis, mis, pp. 591-593
Word Study: Lesson 4: Syllable Pattern VCCCV T269	<b>Syllables and Affixes</b> Sort 14: Syllable Juncture in VCCCV and VV Patterns, pp. 461-463

**A Correlation of Words Their Way Classroom ©2019  
To Florida myView Literacy ©2022 Word Work and Spelling Lessons  
Grade 4**

<b>Florida myView Literacy Word Work and Spelling Lessons Grade 4</b>	<b>Words Their Way Classroom ©2019</b>
<b>Reading-Writing Bridge: Spelling T274-T275</b>	
Lessons 1-3, 5: Spelling: Spell Prefixes dis-, over-, non-, under- T274-T275	<b>Syllables and Affixes</b> Sort 46: Prefixes dis-, mis-, pre, pp. 557-559 Sort 47: Previses ex-, non-, in-, fore-, pp. 560-562 <b>Derivational Relations</b> Sort 2: Prefixes un-, in-, dis, mis, pp. 591-593
Lesson 4: Syllable Pattern VCCCV T275	<b>Syllables and Affixes</b> Sort 14: Syllable Juncture in VCCCV and VV Patterns, pp. 461-463
<b>Reading-Writing Bridge: Word Study T338-T339</b>	
Word Study: Lessons 1-3, 5: Prefixes dis-, over-, non-, under- T338-T339	<b>Syllables and Affixes</b> Sort 46: Prefixes dis-, mis-, pre, pp. 557-559 Sort 47: Previses ex-, non-, in-, fore-, pp. 560-562 <b>Derivational Relations</b> Sort 2: Prefixes un-, in-, dis, mis, pp. 591-593
Word Study: Lesson 4: Word Parts sub-, inter-, fore- T339	<b>Syllables and Affixes</b> Sort 47: Previses ex-, non-, in-, fore-, pp. 560-562 <b>Derivational Relations</b> Sort Latin Prefixes intra-, inter-, intro-, circum-, pp. 651-653 Sort 38: Prefix Assimilation com-, col-, con-; ad-, ob-, sub-, pp. 699-701
<b>Reading-Writing Bridge: Spelling T344-T345</b>	
Lessons 1-3, 5: Spelling: Spell Words with sub-, inter-, fore- T344-T345	<b>Syllables and Affixes</b> Sort 47: Previses ex-, non-, in-, fore-, pp. 560-562 <b>Derivational Relations</b> Sort Latin Prefixes intra-, inter-, intro-, circum-, pp. 651-653 Sort 38: Prefix Assimilation com-, col-, con-; ad-, ob-, sub-, pp. 699-701
Lesson 4: Prefixes dis-, over-, non-, under- T345	<b>Syllables and Affixes</b> Sort 46: Prefixes dis-, mis-, pre, pp. 557-559 Sort 47: Previses ex-, non-, in-, fore-, pp. 560-562 <b>Derivational Relations</b> Sort 2: Prefixes un-, in-, dis, mis, pp. 591-593