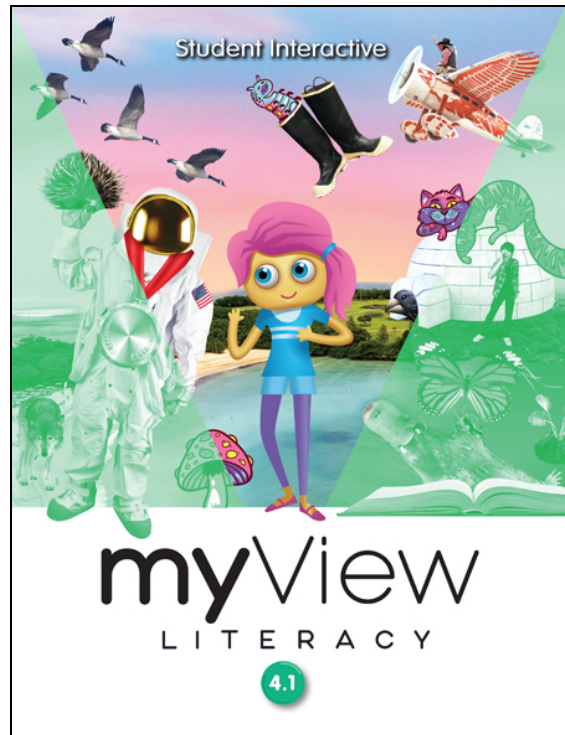


A Correlation of
Words Their Way Classroom
©2019



To

myView Literacy ©2020
Word Work and Spelling Lessons
Grade 4

A Correlation of Words Their Way Classroom ©2019, Grade 4 To myView Literacy ©2020 Word Work and Spelling Lessons

Introduction

This document demonstrates how **Words Their Way Classroom ©2019** works together with **myView Literacy ©2020: Word Work and Spelling Lessons**. Correlation references are to the Words Their Way Classroom Teacher’s Resource Guide and are cited by Level title, Sort name, number and page number. Words Their Way Classroom Sorts can be reinforced online with enhanced digital support available through Realize.

Words Their Way (WTW) Classroom is the classroom-ready version of Words Their Way: Word Study for Phonics, Vocabulary and Spelling Instruction professional development book. Words Their Way Classroom uses the research-based developmental approach to word study that is student-centered and assessment driven. This approach fosters the progression of word knowledge, including the development of phonics, spelling, word recognition, and vocabulary. The Classroom ready-made materials make word study easy to implement and use in the classroom.

myView Literacy is a K-5 comprehensive, interactive literacy program that provides a balanced approach to teaching reading, writing, speaking, listening and viewing using a collection authentic reading texts and collaborative writing workshops. Competencies of 21st century thinking and social-emotional learning are taught and practiced using authentic literature, highly-engaging trade books, collaborative learning, and project-based inquiry. The instructional model follows connected reading and writing workshops that focus on teaching the critical skills and strategies students need to be highly competent thinkers, readers, and writers ready for college and career. It is designed to teach students to think carefully about what they read, discern what is relevant to them, and what is important in their world. myView Literacy offers a balanced instructional model with an emphasis on conceptual understandings, standards-based instruction and application through rigorous performance tasks and the workshop model.

Table of Contents

UNIT 1	4
UNIT 2	8
UNIT 3	10
UNIT 4	15
UNIT 5	18

**A Correlation of Words Their Way Classroom ©2019, Grade 4
To myView Literacy ©2020 Word Work and Spelling Lessons**

myView Literacy Word Work and Spelling Lessons Grade 4	Words Their Way Classroom ©2019
UNIT 1	
Reading-Writing Bridge: Word Study T64-T65	
Lessons 1-5: Suffixes -ed, -ing, -s, -er, -est T64-T65	Syllables and Affixes Sort 3: Adding -ing Words with VCe and VVC patterns, pp. 428-430 Sort 4: Adding -ed (Double/e-Drop/No Change), pp. 431-433 Sort 6: Plural endings -es, -s, pp. 437-439 Sort 8: -y + Inflected endings, pp. 443-445 Sort 50: Comparatives -er, -est, pp. 569-571
Reading-Writing Bridge: Spelling T70-T71	
Lessons 1-5: Spelling: Spell Words with Suffixes T70-T71	Syllables and Affixes Sort 3: Adding -ing Words with VCe and VVC patterns, pp. 428-430 Sort 4: Adding -ed (Double/e-Drop/No Change), pp. 431-433 Sort 6: Plural endings -es, -s, pp. 437-439 Sort 8: -y + Inflected endings, pp. 443-445 Sort 50: Comparatives -er, -est, pp. 569-571
Reading-Writing Bridge: Word Study T130-T131	
Word Study: Lessons 1-3, 5 :Word Study: Suffixes -ty, -ity, -ic, -ment T130-T131	Derivational Relations Sort 1: Suffixes -ment, -less, -ness, pp. 588-590 Sort 5: Suffixes -al, -ial, -ic, pp. 600-602 Sort 15: Adding Suffix -ity: Vowel Alternation (/ə/ to Short), pp. 630-632
Word Study: Lesson 4: Suffixes -ed, -ing, -s, - er, -est T131	Syllables and Affixes Sort 3: Adding -ing Words with VCe and VVC patterns, pp. 428-430 Sort 4: Adding -ed (Double/e-Drop/No Change), pp. 431-433 Sort 6: Plural endings -es, -s, pp. 437-439 Sort 8: -y + Inflected endings, pp. 443-445 Sort 50: Comparatives -er, -est, pp. 569-571

**A Correlation of Words Their Way Classroom ©2019, Grade 4
To myView Literacy ©2020 Word Work and Spelling Lessons**

myView Literacy Word Work and Spelling Lessons Grade 4	Words Their Way Classroom ©2019
Reading-Writing Bridge: Spelling T136-T137	
Lessons 1-3, 5: Spelling: Spell Words with -ty, -ity, -ic, -ment T136-T137	Derivational Relations Sort 1: Suffixes -ment, -less, -ness, pp. 588-590 Sort 5: Suffixes -al, -ial, -ic, pp. 600-602 Sort 15: Adding Suffix -ity: Vowel Alternation (/ə/ to Short), pp. 630-632
Lesson 4: Suffixes -ed, -ing, -s, -er, -est T137	Syllables and Affixes Sort 3: Adding -ing Words with VCe and VVC patterns, pp. 428-430 Sort 4: Adding -ed (Double/e-Drop/No Change), pp. 431-433 Sort 6: Plural endings -es, -s, pp. 437-439 Sort 8: -y + Inflected endings, pp. 443-445 Sort 50: Comparatives -er, -est, pp. 569-571
Reading-Writing Bridge: Word Study T194-T195	
Word Study: Lessons 1-3, 5: Syllable Pattern VCe T194-T195	Syllables and Affixes Sort 17: Long i Patterns in Accented Syllables, pp. 470-472 Sort 18: Long o Patterns in Accented Syllables, pp. 473-475 Sort 19: Long u Patterns oo, u_e in Accented Syllables, pp. 476-478 Sort 20: Review Long Vowel Patterns in Accented Syllables, pp. 482-484
Lesson 4: Suffixes -ty, -ity, -ic, -ment T195	Derivational Relations Sort 1: Suffixes -ment, -less, -ness, pp. 588-590 Sort 5: Suffixes -al, -ial, -ic, pp. 600-602 Sort 15: Adding Suffix -ity: Vowel Alternation (/ə/ to Short), pp. 630-632
Reading-Writing Bridge: Spelling T200-T201	
Lessons 1-3, 5: Spelling: Spell Words with the VCe Pattern T200-T201	Syllables and Affixes Sort 17: Long i Patterns in Accented Syllables, pp. 470-472 Sort 18: Long o Patterns in Accented Syllables, pp. 473-475 Sort 19: Long u Patterns oo, u_e in Accented Syllables, pp. 476-478 Sort 20: Review Long Vowel Patterns in Accented Syllables, pp. 482-484

**A Correlation of Words Their Way Classroom ©2019, Grade 4
To myView Literacy ©2020 Word Work and Spelling Lessons**

myView Literacy Word Work and Spelling Lessons Grade 4	Words Their Way Classroom ©2019
Lesson 4: Suffixes -ity, -ty, -ic, -ment T201	Derivational Relations Sort 1: Suffixes -ment, -less, -ness, pp. 588-590 Sort 5: Suffixes -al, -ial, -ic, pp. 600-602 Sort 15: Adding Suffix -ity: Vowel Alternation (/ə/ to Short), pp. 630-632
Reading-Writing Bridge: Word Study T262-T263	
Lessons 1-3, 5: Word Study: Vowel Teams and Digraphs T262-T263	Within Word Pattern Sort 16: Review CVVC Patterns ai, oo, ee, ea, oa, pp. 328-330 Sort 17: Short a (CVC) and Long a (CVCe, CVVC-ai, and Open Syllable-ay), pp. 331-333 Sort 18: Long o (CVCe, CVVC-oa, CVV-ow, VCC), pp. 334-336 Sort 31: Vowel Digraph oo, pp. 373-375 Sort 32: Ambiguous Vowels aw, au, pp. 376-378
Lesson 4: Syllable Patterns VCe T263	Syllables and Affixes Sort 17: Long i Patterns in Accented Syllables, pp. 470-472 Sort 18: Long o Patterns in Accented Syllables, pp. 473-475 Sort 19: Long u Patterns oo, u_e in Accented Syllables, pp. 476-478 Sort 20: Review Long Vowel Patterns in Accented Syllables, pp. 482-484
Reading-Writing Bridge: Spelling T268-T269	
Lessons 1-3, 5: Spelling: Vowel Teams and Digraphs T268-T269	Within Word Pattern Sort 16: Review CVVC Patterns ai, oo, ee, ea, oa, pp. 328-330 Sort 17: Short a (CVC) and Long a (CVCe, CVVC-ai, and Open Syllable-ay), pp. 331-333 Sort 18: Long o (CVCe, CVVC-oa, CVV-ow, VCC), pp. 334-336 Sort 31: Vowel Digraph oo, pp. 373-375 Sort 32: Ambiguous Vowels aw, au, pp. 376-378

**A Correlation of Words Their Way Classroom ©2019, Grade 4
To myView Literacy ©2020 Word Work and Spelling Lessons**

myView Literacy Word Work and Spelling Lessons Grade 4	Words Their Way Classroom ©2019
Lesson 4: Syllable Pattern VCe T269	Syllables and Affixes Sort 17: Long i Patterns in Accented Syllables, pp. 470-472 Sort 18: Long o Patterns in Accented Syllables, pp. 473-475 Sort 19: Long u Patterns oo, u_e in Accented Syllables, pp. 476-478 Sort 20: Review Long Vowel Patterns in Accented Syllables, pp. 482-484
Reading-Writing Bridge: Word Study T340-T341	
Word Study: Lessons 1-3, 5: Prefixes mis-, en-, em- T340-T341	Syllables and Affixes Sort 46: Prefixes dis-, mis-, pre, pp. 557-559 Derivational Relations Sort 2: Prefixes un-, in-, dis, mis, pp. 591-593
Word Study: Lesson 4: Vowel Team and Digraphs T341	Within Word Pattern Sort 16: Review CVVC Patterns ai, oo, ee, ea, oa, pp. 328-330 Sort 17: Short a (CVC) and Long a (CVCe, CVVC-ai, and Open Syllable-ay), pp. 331-333 Sort 18: Long o (CVCe, CVVC-oa, CVV-ow, VCC), pp. 334-336 Sort 31: Vowel Digraph oo, pp. 373-375 Sort 32: Ambiguous Vowels aw, au, pp. 376-378
Reading-Writing Bridge: Spelling T346-T347	
Lessons 1-3, 5: Spelling: Spell Words with Prefixes T346-T347	Syllables and Affixes Sort 46: Prefixes dis-, mis-, pre, pp. 557-559 Derivational Relations Sort 2: Prefixes un-, in-, dis, mis, pp. 591-593
Lesson 4: Vowel Teams and Digraphs T347	Within Word Pattern Sort 16: Review CVVC Patterns ai, oo, ee, ea, oa, pp. 328-330 Sort 17: Short a (CVC) and Long a (CVCe, CVVC-ai, and Open Syllable-ay), pp. 331-333 Sort 18: Long o (CVCe, CVVC-oa, CVV-ow, VCC), pp. 334-336 Sort 31: Vowel Digraph oo, pp. 373-375 Sort 32: Ambiguous Vowels aw, au, pp. 376-378

**A Correlation of Words Their Way Classroom ©2019, Grade 4
To myView Literacy ©2020 Word Work and Spelling Lessons**

myView Literacy Word Work and Spelling Lessons Grade 4	Words Their Way Classroom ©2019
UNIT 2	
Reading-Writing Bridge: Word Study: Plurals T68-T69	
Word Study: Lessons 1-3, 5: Plurals T68-T69	Syllables and Affixes Sort 6: Plural endings -es, -s, pp. 437-439 Sort 7: Unusual Plurals, pp. 440-442
Word Study: Lesson 4: Prefixes mis-, en-, em- T69	Syllables and Affixes Sort 46: Prefixes dis-, mis-, pre, pp. 557-559 Derivational Relations Sort 2: Prefixes un-, in-, dis, mis, pp. 591-593
Reading-Writing Bridge: Spelling T74-T75	
Lessons 1-3, 5: Spelling: Spell Plurals T74-T75	Syllables and Affixes Sort 6: Plural endings -es, -s, pp. 437-439 Sort 7: Unusual Plurals, pp. 440-442
Lesson 4: Prefixes mis-, en-, em- T75	Syllables and Affixes Sort 46: Prefixes dis-, mis-, pre, pp. 557-559 Derivational Relations Sort 2: Prefixes un-, in-, dis, mis, pp. 591-593
Reading-Writing Bridge: Word Study T142-T143	
Word Study: Lessons 1-3, 5: Vowel Diphthongs T142-T143	Within Word Pattern Sort 30: Diphthongs oi, oy, pp. 370-372 Sort 34: Diphthongs ou, ow, pp. 382-384
Word Study: Lesson 4: Plurals T143	Syllables and Affixes Sort 6: Plural endings -es, -s, pp. 437-439 Sort 7: Unusual Plurals, pp. 440-442
Reading-Writing Bridge: Spelling T148-T149	
Lessons 1-3, 5: Spelling: Vowel Diphthongs T148-T149	Within Word Pattern Sort 30: Diphthongs oi, oy, pp. 370-372 Sort 34: Diphthongs ou, ow, pp. 382-384
Lesson 4: Plurals T149	Syllables and Affixes Sort 6: Plural endings -es, -s, pp. 437-439 Sort 7: Unusual Plurals, pp. 440-442

**A Correlation of Words Their Way Classroom ©2019, Grade 4
To myView Literacy ©2020 Word Work and Spelling Lessons**

myView Literacy Word Work and Spelling Lessons Grade 4	Words Their Way Classroom ©2019
Reading-Writing Bridge: Word Study T206-T207	
Word Study: Lessons 1-3, 5: Irregular Plurals T206-T207	Syllables and Affixes Sort 7: Unusual Plurals, pp. 440-442
Word Study: Lesson 4: Vowel Diphthongs T207	Within Word Pattern Sort 30: Diphthongs oi, oy, pp. 370-372 Sort 34: Diphthongs ou, ow, pp. 382-384
Reading-Writing Bridge: Spelling T212-T213	
Lessons 1-3, 5: Spelling: Spell Irregular Plurals T212-T213	Syllables and Affixes Sort 7: Unusual Plurals, pp. 440-442
Lesson 4: Diphthongs ou, ow, oi, oy T213	Within Word Pattern Sort 30: Diphthongs oi, oy, pp. 370-372 Sort 34: Diphthongs ou, ow, pp. 382-384
Reading-Writing Bridge: Word Study T272-T273	
Word Study: Lessons 1-3, 5: Greek Roots T272-T273	Derivational Relations Sort 14: Greek Word Parts tele-, phon-, photo-, -graph-, pp. 627-629
Word Study: Lesson 4: Irregular Plurals T273	Syllables and Affixes Sort 7: Unusual Plurals, pp. 440-442
Reading-Writing Bridge: Spelling T278-T279	
Lessons 1-3, 5: Spelling: Spell Words with Greek Roots T278-T279	Derivational Relations Sort 14: Greek Word Parts tele-, phon-, photo-, -graph-, pp. 627-629
Lesson 4: Irregular Plurals T279	Syllables and Affixes Sort 7: Unusual Plurals, pp. 440-442
Reading-Writing Bridge: Word Study T342-T343	
Word Study: Lessons 1-3, 5: Latin Roots terr, rupt, tract, aqua, dict T342-T343	Derivational Relations Sort 18: Latin Word Roots gress, rupt, tract, mot, pp. 639-641
Word Study: Lesson 4: Greek Roots bio, phon, scope, graph, meter, tele T343	Derivational Relations Sort 14: Greek Word Parts tele-, phon-, photo-, -graph-, pp. 627-629

**A Correlation of Words Their Way Classroom ©2019, Grade 4
To myView Literacy ©2020 Word Work and Spelling Lessons**

myView Literacy Word Work and Spelling Lessons Grade 4	Words Their Way Classroom ©2019
Reading-Writing Bridge: Spelling T348-T349	
Lessons 1-3, 5: Spelling: Spell Words with Latin Roots terr, rupt, tract, aqua, dict T348-T349	Derivational Relations Sort 18: Latin Word Roots gress, rupt, tract, mot, pp. 639-641
Lesson 4: Greek Roots bio, phon, scope, graph, meter, tele T349	Derivational Relations Sort 14: Greek Word Parts tele-, phon-, photo-, -graph-, pp. 627-629
UNIT 3	
Reading-Writing Bridge: Word Study T56-T57	
Word Study: Lessons 1-3, 5: Related Words T56-T57	Derivational Relations Sort 15: Adding Suffix -ity: Vowel Alternation (/ə/ to Short), pp. 630-632 Sort 16: Adding Suffixes: Vowel Alternation (With Spelling Change), pp. 633-635 Sort 17: Adding the Suffix-ation: Vowel Alternation (With Spelling Changes), pp. 636-638
Word Study: Lesson 4: Greek Roots bio, phon, scope, graph, meter, tele T57	Derivational Relations Sort 14: Greek Word Parts tele-, phon-, photo-, -graph-, pp. 627-629
Reading-Writing Bridge: Spelling T62-T63	
Lessons 1-3, 5: Spelling: Spell Related Words T62-T63	Derivational Relations Sort 15: Adding Suffix -ity: Vowel Alternation (/ə/ to Short), pp. 630-632 Sort 16: Adding Suffixes: Vowel Alternation (With Spelling Change), pp. 633-635 Sort 17: Adding the Suffix-ation: Vowel Alternation (With Spelling Changes), pp. 636-638
Lesson 4: Words with Latin Roots T63	Derivational Relations Sort 18: Latin Word Roots gress, rupt, tract, mot, pp. 639-641

**A Correlation of Words Their Way Classroom ©2019, Grade 4
To myView Literacy ©2020 Word Work and Spelling Lessons**

myView Literacy Word Work and Spelling Lessons Grade 4	Words Their Way Classroom ©2019
Reading-Writing Bridge: Word Study T122-T123	
Word Study: Lessons 1-3, 5: r-Controlled Vowels T122-T123	<p>Within Word Pattern</p> <p>Sort 24: r-Influenced Vowel Patterns ar, are, air, pp. 352-354</p> <p>Sort 25: r-Influenced Vowel Patterns er, ear, eer, pp. 355-357</p> <p>Sort 26: r-Influenced Vowel Patterns ir, ire, ier, pp. 358-360</p> <p>Sort 27: r-Influenced Vowel Patterns or, ore, oar, pp. 361-363</p> <p>Sort 28: r-Influenced Vowel Patterns ur, ure, ur-e, pp. 364-366</p>
Word Study: Lesson 4: Related Words T123	<p>Derivational Relations</p> <p>Sort 15: Adding Suffix -ity: Vowel Alternation (/ə/ to Short), pp. 630-632</p> <p>Sort 16: Adding Suffixes: Vowel Alternation (With Spelling Change), pp. 633-635</p> <p>Sort 17: Adding the Suffix-ation: Vowel Alternation (With Spelling Changes), pp. 636-638</p>
Reading-Writing Bridge: Spelling T128-T129	
Lessons 1-3, 5: Spelling: r-Controlled Vowels T128-T129	<p>Within Word Pattern</p> <p>Sort 24: r-Influenced Vowel Patterns ar, are, air, pp. 352-354</p> <p>Sort 25: r-Influenced Vowel Patterns er, ear, eer, pp. 355-357</p> <p>Sort 26: r-Influenced Vowel Patterns ir, ire, ier, pp. 358-360</p> <p>Sort 27: r-Influenced Vowel Patterns or, ore, oar, 361-363</p> <p>Sort 28: r-Influenced Vowel Patterns ur, ure, ur-e, pp. 364-366</p>

**A Correlation of Words Their Way Classroom ©2019, Grade 4
To myView Literacy ©2020 Word Work and Spelling Lessons**

myView Literacy Word Work and Spelling Lessons Grade 4	Words Their Way Classroom ©2019
Lesson 4: Related Words T129	Derivational Relations Sort 15: Adding Suffix -ity: Vowel Alternation (/ə/ to Short), pp. 630-632 Sort 16: Adding Suffixes: Vowel Alternation (With Spelling Change), pp. 633-635 Sort 17: Adding the Suffix-ation: Vowel Alternation (With Spelling Changes), pp. 636-638
Reading-Writing Bridge: Word Study T194-T195	
Word Study: Lessons 1-3, 5: Final Stable Syllables T194-T195	Syllables and Affixes Sort 29: Unaccented Final Syllable -le, pp. 506-508 Sort 30: Unaccented Final Syllable /ə/ Spelled -le, -el, -il, -al, pp. 509-511 Sort 33: Final Syllable /ər/ Spelled -cher, -ture, -sure, -ure, pp. 518-520
Word Study: Lesson 4: r-Controlled Vowels T195	Within Word Pattern Sort 24: r-Influenced Vowel Patterns ar, are, air, pp. 352-354 Sort 25: r-Influenced Vowel Patterns er, ear, eer, pp. 355-357 Sort 26: r-Influenced Vowel Patterns ir, ire, ier, pp. 358-360 Sort 27: r-Influenced Vowel Patterns or, ore, oar, pp. 361-363 Sort 28: r-Influenced Vowel Patterns ur, ure, ur-e, pp. 364-366
Reading-Writing Bridge: Spelling T200-T201	
Lessons 1-3, 5: Spelling: Spell Multisyllabic Words T200-T201	Syllables and Affixes Sort 29: Unaccented Final Syllable -le, pp. 506-508 Sort 30: Unaccented Final Syllable /ə/ Spelled -le, -el, -il, -al, pp. 509-511 Derivational Relations Sort 6: Adding -ion to Base Words, No Spelling Change, pp. 603-605 Sort 7: Adding -ion and -ian (With No Spelling Change), pp. 606-608 Sort 8: Adding -ion (With e-Drop and Spelling Change), pp. 609-611

**A Correlation of Words Their Way Classroom ©2019, Grade 4
To myView Literacy ©2020 Word Work and Spelling Lessons**

myView Literacy Word Work and Spelling Lessons Grade 4	Words Their Way Classroom ©2019
Lesson 4: r-Controlled Vowels T201	Within Word Pattern Sort 24: r-Influenced Vowel Patterns ar, are, air, pp. 352-354 Sort 25: r-Influenced Vowel Patterns er, ear, eer, pp. 355-357 Sort 26: r-Influenced Vowel Patterns ir, ire, ier, pp. 358-360 Sort 27: r-Influenced Vowel Patterns or, ore, oar, 361-363 Sort 28: r-Influenced Vowel Patterns ur, ure, ur-e, pp. 364-366
Reading-Writing Bridge: Word Study T274-T275	
Word Study: Lessons 1-3, 5: Syllable Patterns V/CV and VC/V T274-T275	Syllables and Affixes Sort 12: Syllable Juncture in VCV and VCCV Patterns, pp. 455-457 Sort 13: Syllable Juncture in VCV and VVCV Patterns, pp. 458-460 Sort 16: Adding Suffixes: Vowel Alternation (With Spelling Change), pp. 633-635 Sort 17: Adding the Suffix-ation: Vowel Alternation (With Spelling Changes), pp. 636-638
Word Study: Lesson 4: Final Stable Syllables T275	Syllables and Affixes Sort 29: Unaccented Final Syllable -le, pp. 506-508 Sort 30: Unaccented Final Syllable /əI/ Spelled -le, -el, -il, -al, pp. 509-511 Sort 33: Final Syllable /ər/ Spelled -cher, -ture, -sure, -ure, pp. 518-520
Reading-Writing Bridge: Spelling T280-T281	
Lessons 1-3, 5: Spelling: Spell V/CV and VC/V Words T280-T281	Syllables and Affixes Sort 12: Syllable Juncture in VCV and VCCV Patterns, pp. 455-457 Sort 13: Syllable Juncture in VCV and VVCV Patterns, pp. 458-460 Sort 16: Long a Patterns in Accented Syllables, pp. 467-469 Sort 18: Long o Patterns in Accented Syllables, pp. 473-475

**A Correlation of Words Their Way Classroom ©2019, Grade 4
To myView Literacy ©2020 Word Work and Spelling Lessons**

myView Literacy Word Work and Spelling Lessons Grade 4	Words Their Way Classroom ©2019
Lesson 4: Final Stable Syllables T281	<p>Syllables and Affixes Sort 29: Unaccented Final Syllable -le, pp. 506-508 Sort 30: Unaccented Final Syllable /əl/ Spelled -le, -el, -il, -al, pp. 509-511 Sort 33: Final Syllable /ər/ Spelled -cher, -ture, -sure, -ure, pp. 518-520</p>
Reading-Writing Bridge: Word Study T334-T335	
Word Study: Lessons 1-3, 5: Silent Letters T334-T335	<p>Within Word Patterns Sort 21: Short i (CVC) and Long i (CVCe, VCC-igh, CV Open Syllable-y), pp. 343-345 Sort 35: Silent Beginning Consonants kn-, wr-, gn-, pp. 385-387 Sort 43: Words with Silent Consonants, pp. 548-550 Derivational Relations Sort 9: Consonant Alternation: Silent and Sounded, pp. 612-614</p>
Word Study: Lesson 4: Syllable Patterns V/CV and VC/V T335	<p>Syllables and Affixes Sort 12: Syllable Juncture in VCV and VCCV Patterns, pp. 455-457 Sort 13: Syllable Juncture in VCV and VCCV Patterns, pp. 458-460 Sort 16: Long a Patterns in Accented Syllables, pp. 467-469 Sort 18: Long o Patterns in Accented Syllables, pp. 473-475</p>
Reading-Writing Bridge: Spelling T340-T341	
Lessons 1-3, 5: Spelling: Spell Word with Silent Letters T340-T341	<p>Within Word Patterns Sort 21: Short i (CVC) and Long i (CVCe, VCC-igh, CV Open Syllable-y), pp. 343-345 Sort 35: Silent Beginning Consonants kn-, wr-, gn-, pp. 385-387 Sort 43: Words with Silent Consonants, pp. 548-550 Derivational Relations Sort 9: Consonant Alternation: Silent and Sounded, pp. 612-614</p>

**A Correlation of Words Their Way Classroom ©2019, Grade 4
To myView Literacy ©2020 Word Work and Spelling Lessons**

myView Literacy Word Work and Spelling Lessons Grade 4	Words Their Way Classroom ©2019
Lesson 4: Syllable Patterns V/CV and VC/V T341	Syllables and Affixes Sort 12: Syllable Juncture in VCV and VCCV Patterns, pp. 455-457 Sort 13: Syllable Juncture in VCV and WCV Patterns, pp. 458-460 Sort 16: Long a Patterns in Accented Syllables, pp. 467-469 Sort 18: Long o Patterns in Accented Syllables, pp. 473-475
UNIT 4	
Reading-Writing Bridge: Word Study T66-T67	
Word Study: Lessons 1-3, 5: Greek and Latin Prefixes T66-T67	Derivational Relations Sort 22: Latin Prefixes intra-, inter-, intro-, circum, pp. 651-653 Sort 26: Prefix Assimilation: in-, pp. 663-665 Sort 28: Number Prefixes mono-, uni-, bi-, tri-, pp. 669-671 Sort 29: Number Prefixes quadr-, quint-, pent-, oct-, cent-, pp. 672-674 Sort 38: Prefix Assimilation com-, col-, con-; ad-, ob-, sub-, pp. 699-701
Word Study: Lesson 4: Silent Letters T67	Within Word Patterns Sort 21: Short i (CVC) and Long i (CVCe, VCC-igh, CV Open Syllable-y), pp. 343-345 Sort 35: Silent Beginning Consonants kn-, wr-, gn-, pp. 385-387 Sort 43: Words with Silent Consonants, pp. 548-550 Derivational Relations Sort 9: Consonant Alternation: Silent and Sounded, pp. 612-614

**A Correlation of Words Their Way Classroom ©2019, Grade 4
To myView Literacy ©2020 Word Work and Spelling Lessons**

myView Literacy Word Work and Spelling Lessons Grade 4	Words Their Way Classroom ©2019
Reading-Writing Bridge: Spelling T72-T73	
Lessons 1-3, 5: Spelling: Spell Greek and Latin Prefixes T72-T73	Derivational Relations Sort 22: Latin Prefixes intra-, inter-, intro-, circum, pp. 651-653 Sort 26: Prefix Assimilation: in-, pp. 663-665 Sort 28: Number Prefixes mono-, uni-, bi-, tri-, pp. 669-671 Sort 29: Number Prefixes quadr-, quint-, pent-, oct-, cent-, pp. 672-674 Sort 38: Prefix Assimilation com-, col-, con-; ad-, ob-, sub-, pp. 699-701
Lesson 4: Silent Letters T73	Within Word Patterns Sort 21: Short i (CVC) and Long i (CVCe, VCC-igh, CV Open Syllable-y), pp. 343-345 Sort 35: Silent Beginning Consonants kn-, wr-, gn-, pp. 385-387 Sort 43: Words with Silent Consonants, pp. 548-550 Derivational Relations Sort 9: Consonant Alternation: Silent and Sounded, pp. 612-614
Reading-Writing Bridge: Word Study T134-T135	
Word Study: Lessons 1-3, 5: Suffixes -able, -ible T134-T135	Derivational Relations Sort 24: Adding Suffixes -able, ible, pp. 657-659 Sort 25: Adding -able and -ible (eDrop, y to i), pp. 660-662
Word Study: Lesson 4: Greek and Latin Prefixes T135	Derivational Relations Sort 22: Latin Prefixes intra-, inter-, intro-, circum, pp. 651-653 Sort 26: Prefix Assimilation: in-, pp. 633-665 Sort 28: Number Prefixes mono-, uni-, bi-, tri-, pp. 669-671 Sort 29: Number Prefixes quadr-, quint-, pent-, oct-, cent-, pp. 672-674 Sort 38: Prefix Assimilation com-, col-, con-; ad-, ob-, sub-, pp. 699-701

**A Correlation of Words Their Way Classroom ©2019, Grade 4
To myView Literacy ©2020 Word Work and Spelling Lessons**

myView Literacy Word Work and Spelling Lessons Grade 4	Words Their Way Classroom ©2019
Reading-Writing Bridge: Spelling T140-T141	
Lessons 1-3, 5: Spelling: Spell Suffixes -able, -ible T140-T141	Derivational Relations Sort 24: Adding Suffixes –able, ible, pp. 657-659 Sort 25: Adding –able and –ible (eDrop, y to i), pp. 660-662
Lesson 4: Greek and Latin Prefixes T141	Derivational Relations Sort 22: Latin Prefixes intra-, inter-, intro-, circum, pp. 651-653 Sort 26: Prefix Assimilation: in-, pp. 506-508 Sort 28: Number Prefixes mono-, uni-, bi-, tri-, pp. 669-671 Sort 29: Number Prefixes quadr-, quint-, pent-, oct-, cent-, pp. 672-674 Sort 38: Prefix Assimilation com-, col-, con-; ad-, ob-, sub-, pp. 699-701
Reading-Writing Bridge: Word Study T202-T203	
Word Study: Lessons 1-3, 5: Syllable Pattern VV T202-T203	Syllables and Affixes Sort 14: Syllable Juncture in VCCCV and VV Patterns, pp. 461-463
Word Study: Lesson 4: Suffixes -able, -ible T203	Derivational Relations Sort 24: Adding Suffixes –able, ible, pp. 657-659 Sort 25: Adding –able and –ible (eDrop, y to i), pp. 660-662
Reading-Writing Bridge: Spelling T208-T209	
Lessons 1-3, 5: Spelling: Spell Syllable Pattern VV T208-T209	Syllables and Affixes Sort 14: Syllable Juncture in VCCCV and VV Patterns, pp. 461-463
Lesson 4: Suffixes -able, -ible T209	Derivational Relations Sort 24: Adding Suffixes –able, ible, pp. 657-659 Sort 25: Adding –able and –ible (eDrop, y to i), pp. 660-662
Reading-Writing Bridge: Word Study T274-T275	
Word Study: Lessons 1-3, 5: Prefixes im-, in-, ir- T274-T275	Derivational Relations Sort 26: Prefix Assimilation: iin-, pp. 663-665

**A Correlation of Words Their Way Classroom ©2019, Grade 4
To myView Literacy ©2020 Word Work and Spelling Lessons**

myView Literacy Word Work and Spelling Lessons Grade 4	Words Their Way Classroom ©2019
Word Study: Lesson 4: Syllable Pattern VV T275	Syllables and Affixes Sort 14: Syllable Juncture in VCCCV and VV Patterns, pp. 461-463
Reading-Writing Bridge: Spelling T280-T281	
Lessons 1-3, 5: Spelling: Spell Prefixes im-, in-, ir- T280-T281	Derivational Relations Sort 26: Prefix Assimilation: in-, pp. 663-665
Lesson 4: Syllable Pattern VV T281	Syllables and Affixes Sort 14: Syllable Juncture in VCCCV and VV Patterns, pp. 461-463
Reading-Writing Bridge: Word Study T346-T347	
Word Study: Lessons 1-3, 5: Homophones T346-T347	Within Word Pattern Sort 42: Long a Homophones #1, pp. 406-408 Sort 43: Long a Homophones #2, pp. 409-411 Sort 44: Short and Long i Homophones, pp. 412-414
Word Study: Lesson 4: Prefixes im-, in-, ir- T347	Derivational Relations Sort 26: Prefix Assimilation: iin-, pp. 663-665
Reading-Writing Bridge: Spelling T352-T353	
Lessons 1-3, 5: Spelling: Spell Prefixes im-, in-, ir- T352-T353	Derivational Relations Sort 26: Prefix Assimilation: in-, pp. 663-665
Lesson 4: Prefixes im-, in-, ir- T353	Derivational Relations Sort 26: Prefix Assimilation: iin-, pp. 663-665
UNIT 5	
Reading-Writing Bridge: Word Study T62-T63	
Word Study: Lessons 1-3, 5: Latin Roots gener, port, dur, ject T62-T63	Derivational Relations Sort 12: Latin Word Roots spect, port, pp. 621-623 Sort 19: Latin Word Roots ject, man, cred, pp. 642-644 Sort 31: Greek and Latin Word Roots gen, mart, onym, pp. 678-680

**A Correlation of Words Their Way Classroom ©2019, Grade 4
To myView Literacy ©2020 Word Work and Spelling Lessons**

myView Literacy Word Work and Spelling Lessons Grade 4	Words Their Way Classroom ©2019
Word Study: Lesson 4: Homophones T63	Within Word Pattern Sort 42: Long a Homophones #1, pp. 406-408 Sort 43: Long a Homophones #2, pp. 409-411 Sort 44: Short and Long i Homophones, pp. 412-414
Reading-Writing Bridge: Spelling T68-T69	
Lessons 1-3, 5: Spelling: Spell Latin Roots gener, port, dur, ject T68-T69	Derivational Relations Sort 12: Latin Word Roots spect, port, pp. 621-623 Sort 19: Latin Word Roots ject, man, cred, pp. 642-644 Sort 31: Greek and Latin Word Roots gen, mart, onym, pp. 678-680
Lesson 4: Homophones T69	Within Word Pattern Sort 42: Long a Homophones #1, pp. 406-408 Sort 43: Long a Homophones #2, pp. 409-411 Sort 44: Short and Long i Homophones, pp. 412-414
Reading-Writing Bridge: Word Study T128-T129	
Word Study: Lessons 1-3, 5: Suffixes -en, -ent, -ence T128-T129	Syllables and Affixes Sort 34: Unaccented Final Syllable /ən/ Spelled -en, -on, -an, -ain, pp. 521-523 Derivational Relations Sort 23: Adding Suffixes -ent/ence, ant/-ance, pp. 654-567
Word Study: Lesson 4: Latin Roots gener, port, dur, ject T129	Derivational Relations Sort 12: Latin Word Roots spect, port, pp. 621-623 Sort 19: Latin Word Roots ject, man, cred, pp. 642-644 Sort 31: Greek and Latin Word Roots gen, mart, onym, pp. 678-680

**A Correlation of Words Their Way Classroom ©2019, Grade 4
To myView Literacy ©2020 Word Work and Spelling Lessons**

myView Literacy Word Work and Spelling Lessons Grade 4	Words Their Way Classroom ©2019
Reading-Writing Bridge: Spelling T134-T135	
Lessons 1-3, 5: Spelling: Spell Words with Suffixes -en, -ent, -ence T134-T135	Syllables and Affixes Sort 34: Unaccented Final Syllable /ən/ Spelled -en, -on, -an, -ain, pp. 521-523 Derivational Relations Sort 23: Adding Suffixes -ent/ence, ant/-ance, pp. 654-567
Lesson 4: Latin Roots gener, port, dur, ject T135	Derivational Relations Sort 12: Latin Word Roots spect, port, pp. 621-623 Sort 19: Latin Word Roots ject, man, cred, pp. 642-644 Sort 31: Greek and Latin Word Roots gen, mart, onym, pp. 678-680
Reading-Writing Bridge: Word Study T202-T203	
Word Study: Lessons 1-3, 5: Syllable Pattern VCCCV T202-T203	Syllables and Affixes Sort 14: Syllable Juncture in VCCCV and VV Patterns, pp. 461-463
Word Study: Lesson 4: Suffixes -en, -ent, -ence T203	Syllables and Affixes Sort 34: Unaccented Final Syllable /ən/ Spelled -en, -on, -an, -ain, pp. 521-523 Derivational Relations Sort 23: Adding Suffixes -ent/ence, ant/-ance, pp. 654-567
Reading-Writing Bridge: Spelling T208-T209	
Lessons 1-3, 5: Spelling: Spell Multisyllabic Words, Pattern VCCCV T208-T209	Syllables and Affixes Sort 14: Syllable Juncture in VCCCV and VV Patterns, pp. 461-463
Lesson 4: Suffixes -en, -ent, -ence T209	Syllables and Affixes Sort 34: Unaccented Final Syllable /ən/ Spelled -en, -on, -an, -ain, pp. 521-523 Derivational Relations Sort 23: Adding Suffixes -ent/ence, ant/-ance, pp. 654-567

**A Correlation of Words Their Way Classroom ©2019, Grade 4
To myView Literacy ©2020 Word Work and Spelling Lessons**

myView Literacy Word Work and Spelling Lessons Grade 4	Words Their Way Classroom ©2019
Reading-Writing Bridge: Word Study T268-T269	
Word Study: Lessons 1-3, 5: Prefixes dis-, over-, non-, under- T268-T269	Syllables and Affixes Sort 46: Prefixes dis-, mis-, pre, pp. 557-559 Sort 47: Previses ex-, non-, in-, fore-, pp. 560-562 Derivational Relations Sort 2: Prefixes un-, in-, dis, mis, pp. 591-593
Word Study: Lesson 4: Syllable Pattern VCCCV T269	Syllables and Affixes Sort 14: Syllable Juncture in VCCCV and VV Patterns, pp. 461-463
Reading-Writing Bridge: Spelling T274-T275	
Lessons 1-3, 5: Spelling: Spell Prefixes dis-, over-, non-, under- T274-T275	Syllables and Affixes Sort 46: Prefixes dis-, mis-, pre, pp. 557-559 Sort 47: Previses ex-, non-, in-, fore-, pp. 560-562 Derivational Relations Sort 2: Prefixes un-, in-, dis, mis, pp. 591-593
Lesson 4: Syllable Pattern VCCCV T275	Syllables and Affixes Sort 14: Syllable Juncture in VCCCV and VV Patterns, pp. 461-463
Reading-Writing Bridge: Word Study T338-T339	
Word Study: Lessons 1-3, 5: Prefixes dis-, over-, non-, under- T338-T339	Syllables and Affixes Sort 46: Prefixes dis-, mis-, pre, pp. 557-559 Sort 47: Previses ex-, non-, in-, fore-, pp. 560-562 Derivational Relations Sort 2: Prefixes un-, in-, dis, mis, pp. 591-593
Word Study: Lesson 4: Word Parts sub-, inter-, fore- T339	Syllables and Affixes Sort 47: Previses ex-, non-, in-, fore-, pp. 560-562 Derivational Relations Sort Latin Prefixes intra-, inter-, intro-, circum-, pp. 651-653 Sort 38: Prefix Assimilation com-, col-, con-; ad-, ob-, sub-, pp. 699-701

**A Correlation of Words Their Way Classroom ©2019, Grade 4
To myView Literacy ©2020 Word Work and Spelling Lessons**

<p align="center">myView Literacy Word Work and Spelling Lessons Grade 4</p>	<p align="center">Words Their Way Classroom ©2019</p>
<p>Reading-Writing Bridge: Spelling T344-T345</p>	
<p>Lessons 1-3, 5: Spelling: Spell Words with sub, inter-, fore- T344-T345</p>	<p>Syllables and Affixes Sort 47: Previses ex-, non-, in-, fore-, pp. 560-562 Derivational Relations Sort Latin Prefixes intra-, inter-, intro-, circum-, pp. 651-653 Sort 38: Prefix Assimilation com-, col-, con-; ad-, ob-, sub-, pp. 699-701</p>
<p>Lesson 4: Prefixes dis-, over-, non-, under- T345</p>	<p>Syllables and Affixes Sort 46: Prefixes dis-, mis-, pre, pp. 557-559 Sort 47: Previses ex-, non-, in-, fore-, pp. 560-562 Derivational Relations Sort 2: Prefixes un-, in-, dis, mis, pp. 591-593</p>