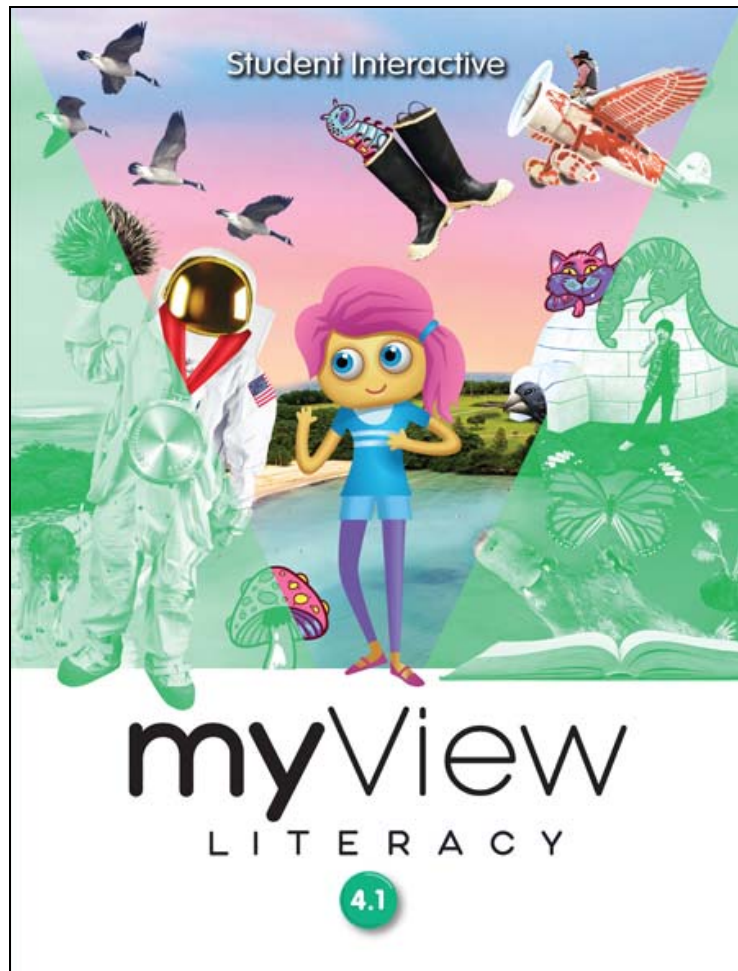


## A Correlation of



**Grade 4, ©2020**

To the

**Pennsylvania Core Standards  
English Language Arts  
Grade 4**

**SAVVAS**

# **A Correlation of myView Literacy ©2020, Grade 4 To the Pennsylvania Core Standards for English Language Arts**

## **Introduction**

This document demonstrates how **myView Literacy, ©2020** meets the **Pennsylvania Core Standards, English Language Arts**. Correlation page references are to the Teacher’s Edition and are cited by grade, unit and page references.

*myView Literacy* is a K-5 comprehensive, interactive literacy program that provides a balanced approach to teaching reading, writing, speaking, listening and viewing using a collection authentic reading texts and collaborative writing workshops. Competencies of 21st century thinking and social-emotional learning are taught and practiced using authentic literature, highly-engaging trade books, collaborative learning, and project-based inquiry. The instructional model follows connected reading and writing workshops that focus on teaching the critical skills and strategies students need to be highly competent thinkers, readers, and writers ready for college and career. It is designed to teach students to think carefully about what they read, discern what is relevant to them, and what is important in their world. *myView Literacy* offers a balanced instructional model with an emphasis on conceptual understandings, standards-based instruction and application through rigorous performance tasks and the workshop model.

### **Inspire Confidence and Collaboration**

- Create opportunities for student success. Provide a supportive and nurturing environment that empowers students to become independent learners.

### **Focus on Balance and Flexibility**

- Develop predictable routines for teaching and learning. Minilessons, small groups, and collaboration lead to a gradual release of responsibility.

### **Nurture Every Learner**

- Spend more time coaching, differentiating, and promoting positive attitudes toward reading and writing.

**A Correlation of myView Literacy ©2020, Grade 4  
To the Pennsylvania Core Standards for English Language Arts**

**Table of Contents**

|   |           |
|---|-----------|
| <b>CC.1.1.4 Foundational Skills:</b> .....        | <b>4</b>  |
| <b>CC.1.2.4 Reading Informational Text:</b> ..... | <b>6</b>  |
| <b>CC.1.3.4 Reading Literature:</b> .....         | <b>13</b> |
| <b>CC.1.4.4 Writing:</b> .....                    | <b>19</b> |
| <b>CC.1.5.4 Speaking and Listening:</b> .....     | <b>32</b> |

**A Correlation of myView Literacy ©2020, Grade 4  
To the Pennsylvania Core Standards for English Language Arts**

| Pennsylvania Core Standards<br>for English Language Arts   | myView Literacy<br>Grade 4, ©2020   |
|--|---|
| <b>CC.1.1.4 Foundational Skills:</b> Students gain a working knowledge of concepts of print, alphabetic principle, and other basic conventions.                    |   |
| <b>Phonics and Word Recognition</b>  |   |
| CC.1.1.4.D Know and apply grade-level phonics and word analysis skills in decoding words.  |   |
| CC.1.1.4.D.1 Use combined knowledge of all letter-sound correspondences, syllabication patterns, and morphology to read accurately unfamiliar multisyllabic words. | <p><b>Unit 1:</b><br/>Suffixes, T33, T41, T43, T64-T65, T130-T131<br/>Academic Vocabulary: Related Words, T39, T62-T63<br/>Word Study: Syllable Patterns, T194-T195, T200-T201, T262-T263</p> <p><b>Unit 2:</b><br/>Academic Vocabulary: Related Words, T43, T66-T67<br/>Word Study: Prefixes, T68-T69<br/>Word Study: Roots, T272-T273</p> <p><b>Unit 4:</b><br/>Word Study: Prefixes, T274-T275</p> <p><b>Unit 2:</b><br/>Word Study: Roots, T62-T63<br/>Word Study: Suffixes, T128-T129</p> <p><b>Digital Resources:</b> <i>Resource Download Center:</i><br/>Spelling; Vocabulary</p> |
| <b>Fluency</b>   |   |
| CC.1.1.4.E Read with accuracy and fluency to support comprehension:  |   |
| CC.1.1.4.E.1 Read on-level text with purpose and   | <b>Unit 1:</b>  |

**A Correlation of myView Literacy ©2020, Grade 4  
To the Pennsylvania Core Standards for English Language Arts**

| <p style="text-align: center;"><b>Pennsylvania Core Standards<br/>for English Language Arts</b></p>                    | <p style="text-align: center;"><b>myView Literacy<br/>Grade 4, ©2020</b></p>  |
|--|---|
| <p>understanding.</p>  | <p>Read, T30, T98, T164, T296<br/>Spotlight on Genre, T92–T93, T290–T291<br/><b>Unit 2:</b><br/>Read, T30, T176, T240, T306<br/>Genre and Theme, T234–T235<br/>Read and Compare, T316<br/><b>Unit 3:</b><br/>Read, T30, T90, T156, T228, T308<br/>Read and Compare, T242<br/><b>Unit 4:</b><br/>Read, T30, T100, T168, T236<br/><b>Unit 5:</b><br/>Read, T30, T96, T162, T236, T302<br/>View and Compare, T318</p> <p><b>Digital Resources:</b> <i>Book Club: Trade Books: Units 1–5; Leveled Readers: Levels 1–5; Professional Development Center: Foundational Skills: Fluency</i></p>          |
| <p>CC.1.1.4.E.2 Read on-level text orally with accuracy, appropriate rate, and expression on successive readings.</p>  | <p><b>Unit 1:</b><br/>Fluency, T48, T52, T56, T114<br/>Spotlight on Genre, T222–T223<br/><b>Unit 2:</b><br/>Fluency, T126, T186, T256, T326<br/>Genre and Theme, T170–T171<br/><b>Unit 3:</b><br/>Fluency, T44, T148, T182, T326<br/><b>Unit 4:</b><br/>Fluency, T50, T126, T160, T190, T254<br/>Genre and Theme, T230–T231<br/><b>Unit 5:</b><br/>Fluency, T183, T190, T194, T252, T322<br/>Genre and Theme, T156–T157</p> <p><b>Digital Resources:</b> <i>Book Club: Trade Books: Units 1–5; Leveled Readers: Levels 1–5; Professional Development Center: Foundational Skills: Fluency</i></p> |
| <p>CC.1.1.4.E.3 Use context to confirm or self-correct word recognition and understanding, rereading as necessary.</p> | <p><b>Unit 1:</b><br/>Develop Vocabulary, T26, T94, T160, T224<br/>Vocabulary in Context, T34, T108, T166, T242, T311<br/>Context Clues, T166, T192–T193</p>  |

**A Correlation of myView Literacy ©2020, Grade 4  
To the Pennsylvania Core Standards for English Language Arts**

| <p style="text-align: center;"><b>Pennsylvania Core Standards<br/>for English Language Arts</b></p>  | <p style="text-align: center;"><b>myView Literacy<br/>Grade 4, ©2020</b></p>  |
|--|---|
|  | <p>First Read: Connect, T242</p> <p><b>Unit 2:</b><br/>Vocabulary in Context, T34, T122, T248, T314<br/>Related Words, T43, T48, T66-T67<br/>Context Clues, T184, T204-T205</p> <p><b>Unit 3:</b><br/>Develop Vocabulary, T26, T152, T224, T304<br/>Vocabulary in Context, T37, T162, T246, T315<br/>Context Clues, T192</p> <p><b>Unit 4:</b><br/>Vocabulary in Context, T34, T104, T175, T239, T324<br/>Develop Vocabulary, T26, T96, T304<br/>Academic Vocabulary: Context Clues, T172, T178,<br/>T200–T201</p> <p><b>Unit 5:</b><br/>Vocabulary in Context, T40, T105, T173, T238, T305<br/>Develop Vocabulary, T232<br/>Context Clues, T167, T170, T179, T200</p> <p><b>Digital Resources:</b> <i>Resource Download Center:</i><br/>Spelling; Vocabulary</p> |
| <p><b>CC.1.2.4 Reading Informational Text:</b> Students read, understand, and respond to informational text - with emphasis on comprehension, vocabulary acquisition, and making connections among ideas and between texts with focus on textual evidence.</p> |   |
| <p><b>Key Ideas and Details Main Idea</b></p>  |   |
| <p>CC.1.2.4.A Determine the main idea of a text and explain how it is supported by key details; summarize the text.</p>  | <p><b>Unit 1:</b><br/>Analyze Main Idea and Details, T94, T100, T116-T117, T118<br/>Summarize a Text, T293, T301, T330-T331, T332</p>   |

**A Correlation of myView Literacy ©2020, Grade 4  
To the Pennsylvania Core Standards for English Language Arts**

| <p style="text-align: center;"><b>Pennsylvania Core Standards<br/>for English Language Arts</b></p>                   | <p style="text-align: center;"><b>myView Literacy<br/>Grade 4, ©2020</b></p>  |
|---|---|
|   | <p>Evaluate Details, T161, T184-T185, T186<br/>Whole Group, T119, T187, T333</p> <p><b>Unit 2:</b><br/>Analyze Main Idea and Details, T23, T24-T25, T26, T32, T54-T55, T56<br/>First Read: Notice, T32<br/>Whole Group, T57<br/>Informational Writing, T368</p> <p><b>Unit 5:</b><br/>Analyze Main Idea and Details, T92, T98, T114, T116<br/>Explain Ideas, T232, T239, T254, T256<br/>Summarize, T96, T159, T167, T192, T194<br/>Informational Text, T88, T90t, T94, T294<br/>Whole Group, T117, T195<br/>Wrap-Up, T89, T295</p> <p><b>Digital Resources:</b> <i>Book Club: Trade Books: Units 1–5; Leveled Readers: Units 1–5; Professional Development Center: Comprehension &amp; Assessment</i></p> |
| <p><b>Key Ideas and Details Text Analysis</b></p>   |   |
| <p>CC.1.2.4.B Refer to details and examples in text to support what the text says explicitly and make inferences.</p> | <p><b>Unit 1:</b><br/>Close Read: Use Text Evidence, T27, T33, T41, T54-T55, T56-T57<br/>First Read: Respond, T311<br/>Evaluate Details, T168</p> <p><b>Unit 2:</b><br/>Read, T102<br/>Synthesize Information, T309, T330</p> <p><b>Unit 5:</b><br/>Make Inferences, T27, T33, T52, T54, T233, T241,</p>  |

**A Correlation of myView Literacy ©2020, Grade 4  
To the Pennsylvania Core Standards for English Language Arts**

| <p style="text-align: center;"><b>Pennsylvania Core Standards<br/>for English Language Arts</b></p>   | <p style="text-align: center;"><b>myView Literacy<br/>Grade 4, ©2020</b></p>   |
|---|--|
|   | <p>T258, T260, T313, T315<br/>Whole Group, T55, T261<br/>First Read: Notice, T176<br/>First Read: Respond, T177, T248<br/>Use Text Evidence to Explain Concepts, T328-T329</p> <p><b>Digital Resources:</b> <i>Book Club: Trade Books: Units 1–5; Leveled Readers: Units 1–5; Professional Development Center: Comprehension &amp; Assessment</i></p>  |
| <p>CC.1.2.4.C Explain events, procedures, ideas, or concepts in a text, including what happened and why, based on specific information in the text.</p> | <p><b>Unit 1:</b><br/>Cross-Curricular Perspectives: Social Studies, T38, T167, T298<br/>Exploring Mars, T156<br/>Analyze Main Idea And Details, T116-T117<br/>Text Structure, T326-T327</p> <p><b>Unit 2:</b><br/>Cross-Curricular Perspectives: Science, T37, T104, T113, T309</p> <p><b>Unit 3:</b><br/>Cross-Curricular Perspectives: Social Studies, T158</p> <p><b>Unit 5:</b><br/>Use Text Evidence To Explain Concepts, T299, T307, T313, T328–T329, T330, T331<br/>Explain Ideas, T254–T255</p> <p><b>Digital Resources:</b> <i>Book Club: Trade Books: Units 1–5; Leveled Readers: Units 1–5; Professional Development: Comprehension &amp; Assessment</i></p> |
| <p><b>Craft and Structure Point of View</b></p>   |  |
| <p>CC.1.2.4.D Compare and contrast an event or topic told from two different points of view.</p>  | <p><b>Unit 1:</b><br/>Refine Research: Primary and Secondary Sources, T372-T373</p> <p><b>Unit 5:</b><br/>Compare and Contrast Accounts, T306, T309, T311, T312, T314, T319, T324-T325, T326-T327<br/>Refine Research: Primary and Secondary Sources, T370-T371</p> <p><b>Digital Resources:</b> <i>Book Club: Trade Books: Units 1–5; Leveled Readers: Units 1–5; Professional Development Center: Comprehension &amp; Assessment</i></p>   |
| <p><b>Craft and Structure Text Structure</b></p>  |  |



**A Correlation of myView Literacy ©2020, Grade 4  
To the Pennsylvania Core Standards for English Language Arts**

| <p style="text-align: center;"><b>Pennsylvania Core Standards<br/>for English Language Arts</b></p>                               | <p style="text-align: center;"><b>myView Literacy<br/>Grade 4, ©2020</b></p>  |
|---|---|
| <p>CC.1.2.4.E Use text structure to interpret information (e.g., chronology, comparison, cause/effect, problem/ solution).</p>    | <p><b>Unit 1:</b><br/>Biography, T288<br/>Analyze Text Structure, T196-T197, T198-T199, T326-T327<br/>Read Like A Writer: Author's Craft, T174, T314, T321<br/>Analyze Text Structure, T328</p> <p><b>Unit 2:</b><br/>Analyze Text Structure, T98, T104, T106, T128-T129, T130, T344-T345, T346-T347<br/>Read Like A Writer: Author's Craft, T315</p> <p><b>Unit 5:</b><br/>Minilesson: Text Structure, T64, T66<br/>Turn, Talk, And Share/Use Independent Text, T231</p> <p><b>Digital Resources:</b> <i>Book Club: Trade Books: Units 1–5; Leveled Readers: Units 1–5; Professional Development Center: Comprehension &amp; Assessment</i></p>                                    |
| <b>Craft and Structure Vocabulary</b>   |   |
| <p>CC.1.2.4.F Determine the meaning of words and phrases as they are used in grade level text, including figurative language.</p> | <p><b>Unit 1:</b><br/>Figurative Language, T132-T133, T242, T260-T261<br/>Whole Group<br/>Preview Vocabulary, T296<br/>ELL Targeted Support: Vocabulary, T302, T306, T309<br/>Develop Vocabulary, T176–T177, T246, T247, T322-T323, T324<br/>Whole Group, T325</p> <p><b>Unit 2:</b><br/>Academic Vocabulary, T20, T92, T166, T296<br/>Related Words, T66–T67<br/>Preview Vocabulary, T102, T306, T316<br/>ELL Targeted Support: Vocabulary, T310, T369<br/>Develop Vocabulary, T98, T324-T325, T326, T327</p> <p><b>Unit 3:</b><br/>Possible Teaching Point: Figurative Language, T159<br/>Vocabulary in Context, T162</p> <p><b>Unit 5:</b><br/>Develop Vocabulary, T184–T185</p> |

**A Correlation of myView Literacy ©2020, Grade 4  
To the Pennsylvania Core Standards for English Language Arts**

| <p style="text-align: center;"><b>Pennsylvania Core Standards<br/>for English Language Arts</b></p>   | <p style="text-align: center;"><b>myView Literacy<br/>Grade 4, ©2020</b></p>  |
|---|---|
|   | <p>Vocabulary in Context, T310<br/>Figurative Language, T238, T240, T266</p> <p><b>Digital Resources: Digital Resources:</b> <i>Professional Development Center: Vocabulary; Leveled Readers</i></p>  |
| <p><b>Integration of Knowledge and Ideas Diverse Media</b></p>  |   |
| <p>CC.1.2.4.G Interpret various presentations of information within a text or digital source and explain how the information contributes to an understanding of text in which it appears.</p> | <p><b>Unit 1:</b><br/>Map, T20–T21<br/>Possible Teaching Point: Analyze Author's Use of Graphics, T32, T42, T237<br/>Informational Text, T222-T223<br/>Analyze Text Features, T224, T230, T236, T248-T249, T250<br/>Analyze Author's Use of Graphics, T66-T67, T264-T265, T266-T267<br/>Explore the Infographic, T88, T218</p> <p><b>Unit 2:</b><br/>Explore the Infographic, T20<br/>Print and Graphic Features, T34, T42, T70-T71, T72-T73<br/>Analyze Photographs, T84<br/>Explore Media, T92</p> <p><b>Unit 3:</b><br/>Explore the Media, T146</p> <p><b>Unit 5:</b><br/>Analyze Text Features, T34, T48-T49, T50-T51, T270-T271<br/>Informational Texts and Video, T296-T297</p> |

**A Correlation of myView Literacy ©2020, Grade 4  
To the Pennsylvania Core Standards for English Language Arts**

| <p style="text-align: center;"><b>Pennsylvania Core Standards<br/>for English Language Arts</b></p>                  | <p style="text-align: center;"><b>myView Literacy<br/>Grade 4, ©2020</b></p>  |
|--|---|
|  | <p><b>Digital Resources:</b> <i>Book Club: Trade Books: Units 1–5; Leveled Readers: Units 1–5; Professional Development Center: Comprehension &amp; Assessment</i></p>  |
| <p><b>Integration of Knowledge and Ideas Evaluating Arguments</b></p>  |   |
| <p>CC.1.2.4.H Explain how an author uses reasons and evidence to support particular points in a text.</p>            | <p><b>Unit 2:</b><br/>Minilesson: Write to Sources, T266-T267</p> <p><b>Unit 3:</b><br/>Argumentative Writing, T360<br/>Differentiated Support: Intervention/Extend, T361</p> <p><b>Unit 5:</b><br/>Analyze Argument, T156-T157, T158, T177, T182, T188-T189<br/>Opinions and Claims, T364, T365<br/>Peer Review, T374</p> <p><b>Digital Resources:</b> <i>Book Club: Trade Books: Units 1–5; Leveled Readers: Units 1–5; Professional Development Center: Comprehension &amp; Assessment</i></p> |
| <p><b>Integration of Knowledge and Ideas Analysis Across Texts</b></p>   |   |
| <p>CC.1.2.4.I Integrate information from two texts on the same topic to demonstrate understanding of that topic.</p> | <p><b>Unit 1:</b><br/>Minilesson: Write To Sources, T256-T257<br/>Compare Texts, T336, T337, T362<br/>Making Connections, T363</p> <p><b>Unit 2:</b><br/>Compare Texts, T64, T65, T99, T138<br/>Minilesson: Talk About It, T136-T137<br/>Synthesize Information, T328–T329</p> <p><b>Unit 3:</b></p>  |

**A Correlation of myView Literacy ©2020, Grade 4  
To the Pennsylvania Core Standards for English Language Arts**

| <p style="text-align: center;"><b>Pennsylvania Core Standards<br/>for English Language Arts</b></p>   | <p style="text-align: center;"><b>myView Literacy<br/>Grade 4, ©2020</b></p>   |
|---|--|
|   | <p>Compare Texts, T356<br/> <b>Unit 5:</b><br/>           Features, T360<br/>           Compare Across Texts, T360</p> <p><b>Digital Resources:</b> <i>Book Club: Trade Books: Units 1–5; Leveled Readers: Units 1–5; Professional Development Center: Comprehension &amp; Assessment</i></p>  |
| <p><b>Vocabulary Acquisition and Use</b></p>  |  |
| <p>CC.1.2.4.J Acquire and use accurately grade-appropriate conversational, general academic, and domain-specific words and phrases, including those that signal precise actions, emotions, or states of being and that are basic to a particular topic.</p> | <p>This standard is met throughout the program. See the following representative citations:</p> <p><b>Unit 1:</b><br/>           Academic Vocabulary, T20, T88, T154, T218, T286<br/>           Develop Vocabulary, T46, T112, T176, T244, T322</p> <p><b>Unit 2:</b><br/>           Academic Vocabulary, T20, T92, T166, T230, T296<br/>           Develop Vocabulary, T50, T124, T188, T254, T324</p> <p><b>Unit 3:</b><br/>           Develop Vocabulary, T38, T104, T176, T256<br/>           Academic Vocabulary, T20, T80, T146, T218, T298</p> <p><b>Unit 4:</b><br/>           Academic Vocabulary, T48, T116, T184, T256, T328<br/>           Develop Vocabulary, T20, T90, T158, T226, T298</p> <p><b>Unit 5:</b><br/>           Academic Words, T20, T86, T152, T226, T292<br/>           Develop Vocabulary, T44, T110, T184, T250, T320</p> <p><b>Digital Resources: Digital Resources:</b> <i>Resource Download Center: Spelling; Vocabulary</i></p> |
| <p>CC.1.2.4.K Determine or clarify the meaning of unknown and multiple-meaning words and phrases based on grade level reading and content, choosing flexibly from a range of strategies and tools.</p>  | <p>This standard is met throughout the program. See the following representative citations:</p> <p><b>Unit 1:</b><br/>           Develop Vocabulary, T46, T112, T176, T244, T322</p> <p><b>Unit 2:</b><br/>           Develop Vocabulary, T50, T124, T188, T254, T324</p> <p><b>Unit 3:</b></p>  |

**A Correlation of myView Literacy ©2020, Grade 4  
To the Pennsylvania Core Standards for English Language Arts**

| <p style="text-align: center;"><b>Pennsylvania Core Standards<br/>for English Language Arts</b></p>  | <p style="text-align: center;"><b>myView Literacy<br/>Grade 4, ©2020</b></p>   |
|--|--|
|  | <p>Academic Vocabulary, T20, T80, T146, T218, T298<br/> <b>Unit 4:</b><br/>           Develop Vocabulary, T20, T90, T158, T226, T298<br/> <b>Unit 5:</b><br/>           Develop Vocabulary, T44, T110, T184, T250, T320</p> <p><b>Digital Resources: Digital Resources:</b> <i>Resource Download Center: Spelling; Vocabulary</i></p>  |
| <p><b>Range of Reading</b></p>   |  |
| <p>CC.1.2.4.L Read and comprehend literary nonfiction and informational text on grade level, reading independently and proficiently.</p>   | <p><b>Unit 1:</b><br/>           Matching Texts to Learning (Leveled Readers), T26-T27, T94-T95, T160-T161, T224-T225, T292-T293<br/>           Identify Biographies, T94<br/>           Identify Magazine Articles, T160</p> <p><b>Unit 2:</b><br/>           Identify Informational Text, T26, T98<br/>           Matching Texts to Learning (Leveled Readers), T26-T27, T98-T99, T236-T237</p> <p><b>Unit 3:</b><br/>           Matching Texts to Learning (Leveled Readers), T86-T87, T152-T153, T224-T225, T304-T305<br/>           Identify Autobiographies, T152</p> <p><b>Unit 4:</b><br/>           Matching Texts to Learning (Leveled Readers), T232-T233, T304-T305</p> <p><b>Unit 5:</b><br/>           Identify Informational Text, T26, T92, T158<br/>           Matching Texts to Learning (Leveled Readers), T26-T27, T92-T93, T158-T159, T232-T233, T298-T299<br/>           Critical Literacy, T364</p> <p><b>Digital Resources:</b> <i>Book Club: Trade Books: Units 1–5; Leveled Readers: Units 1–5</i></p> |
| <p><b>CC.1.3.4 Reading Literature:</b> Students read and respond to works of literature - with emphasis on comprehension, vocabulary acquisition, and making connections among ideas and between texts with focus on textual evidence.</p> |  |
| <p><b>Key Ideas and Details Theme</b></p>  |  |
| <p>CC.1.3.4.A Determine a theme of a text from details in the text; summarize the text.</p>  | <p><b>Unit 2:</b><br/>           ELL Targeted Support: Retell, T192, T258</p> <p><b>Unit 3:</b></p>  |

**A Correlation of myView Literacy ©2020, Grade 4  
To the Pennsylvania Core Standards for English Language Arts**

| <p style="text-align: center;"><b>Pennsylvania Core Standards<br/>for English Language Arts</b></p>                              | <p style="text-align: center;"><b>myView Literacy<br/>Grade 4, ©2020</b></p>   |
|--|--|
| <p>(Continued)</p>   | <p>ELL Targeted Support: Retell, T94<br/> <b>Unit 4:</b><br/>           ELL Targeted Support: Summary, T13<br/>           Infer Theme, T96, T103, T120, T122, T232, T241, T260, T262<br/>           Summarize Literary Text, T165, T177, T192, T194<br/>           Retell, T242, T248<br/>           Minilesson: Analyze Myths, T332</p> <p>(Continued)<br/> <b>Digital Resources:</b> <i>Book Club: Trade Books:</i> Units 1–5; <i>Leveled Readers:</i> Units 1–5; <i>Professional Development Center:</i> Comprehension &amp; Assessment</p>   |
| <p><b>Key Ideas and Details Text Analysis</b></p>  |  |
| <p>CC.1.3.4.B Cite relevant details from text to support what the text says explicitly and make inferences.</p>                  | <p><b>Unit 1:</b><br/>           Guided Reading Instruction Prompts, T27<br/>           Close Read: Use Text Evidence, T33, T41, T54-T55<br/> <b>Unit 2:</b><br/>           Read, T30<br/>           Use Text Evidence, T173, T182, T196-T197<br/> <b>Unit 3:</b><br/>           Make Inferences About Characters, T27, T33, T46, T48<br/>           Whole Group, T49<br/> <b>Unit 4:</b><br/>           Infer Theme, T103 T120-T121, T241, T260-T261</p> <p><b>Digital Resources:</b> <i>Book Club: Trade Books:</i> Units 1–5; <i>Leveled Readers:</i> Units 1–5; <i>Professional Development Center:</i> Comprehension &amp; Assessment</p> |
| <p><b>Key Ideas and Details Literary Elements</b></p>  |  |
| <p>CC.1.3.4.C Describe in depth a character, setting, or event in a story or drama, drawing on specific details in the text.</p> | <p><b>Unit 2:</b><br/>           Wrap-Up: Encounter, T169<br/>           Minilesson: Fiction, T170-T171<br/>           Identify Fiction, T174<br/>           Use Text Evidence, T196-T197, T198<br/>           Minilesson: Use Figurative Language, T210<br/>           Close Read: Analyze Plot and Setting, T178, T192-T193, T194<br/> <b>Unit 3:</b><br/>           ELL Targeted Support: Describe, T24<br/>           Strategy Group: Analyze Characters, T42–T43, T44</p>   |

**A Correlation of myView Literacy ©2020, Grade 4  
To the Pennsylvania Core Standards for English Language Arts**

| <p style="text-align: center;"><b>Pennsylvania Core Standards<br/>for English Language Arts</b></p>  | <p style="text-align: center;"><b>myView Literacy<br/>Grade 4, ©2020</b></p>  |
|--|---|
| <p>(Continued)</p>   | <p>Plot Elements, T83<br/>Analyze Plot and Setting, T108<br/>Whole Group, T111</p> <p>(Continued)<br/><b>Unit 4:</b><br/>Analyze Characters, T52<br/>Minilesson: Write to Sources, T128<br/>Evaluate Details, T305<br/>Minilesson: Evaluate Details, T336<br/>Strategy Group: Evaluate Details, T338</p> <p><b>Digital Resources:</b> <i>Book Club: Trade Books:</i> Units 1–5; <i>Leveled Readers:</i> Units 1–5; <i>Professional Development Center:</i> Comprehension &amp; Assessment</p> |
| <p><b>Craft and Structure Point of View</b></p>  |   |
| <p>CC.1.3.4.D Compare and contrast an event or topic told from two different points of view.</p>   | <p><b>Unit 3:</b><br/>T136<br/>Guided Reading Instruction Prompts: Compare and Contrast Point of View, T224, T230, T232, T233, T238, T241, T247 T260-T261, T262-T263<br/>Possible Teaching Point: Read Like a Writer: Author's Craft, T250</p> <p><b>Digital Resources:</b> <i>Book Club: Trade Books:</i> Units 1–5; <i>Leveled Readers:</i> Units 1–5; <i>Professional Development Center:</i> Comprehension &amp; Assessment</p>   |
| <p><b>Craft and Structure Text Structure</b></p>   |   |
| <p>CC.1.3.4.E Explain major differences between poems, drama and prose and refer to the structural elements of each when writing or speaking about a text.</p> | <p><b>Unit 2:</b><br/>Fiction, T170-T171<br/>Analyze Poetry, T232, T234-T235, T238<br/>First Read: Notice, T242, T243, T246, T250<br/>Possible Teaching Point: Author's Craft, T251<br/>Explain Poetic Language and Elements, T258-T259</p> <p><b>Unit 3:</b><br/>Poetry, T300, T302, T304<br/>Possible Teaching Author's Craft, T314<br/>Reflect and Share: Talk About It, T328</p>  |

**A Correlation of myView Literacy ©2020, Grade 4  
To the Pennsylvania Core Standards for English Language Arts**

| <p style="text-align: center;"><b>Pennsylvania Core Standards<br/>for English Language Arts</b></p>                               | <p style="text-align: center;"><b>myView Literacy<br/>Grade 4, ©2020</b></p>   |
|---|--|
| <p>(Continued)</p>  | <p>(Continued)<br/> <b>Unit 4:</b><br/>                     Traditional Literature, T24<br/>                     Think Aloud: Analyze Drama, T160, T162, T164,<br/>                     T188–T189<br/>                     Possible Teaching Point: Read Like a Writer:<br/>                     Author's Craft, T171<br/> <b>Unit 5:</b><br/>                     Understand Poetry, T76<br/>                     Explore What Poetry Sounds Like, T77<br/>                     Minilesson: Explore What Poetry Looks Like, T78<br/>                     Explain Elements of Drama, T188–T189<br/>                     Minilesson: Select A Genre, T220<br/><br/> <b>Digital Resources:</b> <i>Book Club: Trade Books: Units 1–5; Leveled Readers: Units 1–5; Professional Development Center: Comprehension &amp; Assessment</i></p>   |
| <p><b>Craft and Structure Vocabulary</b></p>  |  |
| <p>CC.1.3.4.F Determine the meaning of words and phrases as they are used in grade-level text, including figurative language.</p> | <p><b>Unit 2:</b><br/>                     Preview Vocabulary, T176<br/>                     Develop Vocabulary, T26, T30, T188-T189, T190,<br/>                     T236, T254-T255, T256<br/>                     Whole Group, T191<br/>                     Minilesson: Visualize Imagery, T262-T263<br/> <b>Unit 3:</b><br/>                     Preview Vocabulary, T30-T31<br/>                     Possible Teaching Point: Author's Craft, T34<br/>                     Develop Vocabulary, T224<br/>                     Figurative Language, T245, T249T272-T273<br/> <b>Unit 4:</b><br/>                     T217<br/>                     Figurative Language, T250, T272-T273<br/>                     Expressions (Myths), T314<br/>                     Develop Vocabulary, T328-T329<br/><br/> <b>Digital Resources:</b> <i>Book Club: Trade Books: Units 1–5; Leveled Readers: Units 1–5; Professional Development Center: Comprehension &amp; Assessment</i></p> |
| <p><b>Integration of Knowledge and Ideas Sources of Information</b></p>   |  |
| <p>CC.1.3.4.G Make connections between the text of a</p>  | <p><b>Unit 2:</b></p>  |



**A Correlation of myView Literacy ©2020, Grade 4  
To the Pennsylvania Core Standards for English Language Arts**

| <p style="text-align: center;"><b>Pennsylvania Core Standards<br/>for English Language Arts</b></p>   | <p style="text-align: center;"><b>myView Literacy<br/>Grade 4, ©2020</b></p>   |
|---|--|
| <p>story or drama and a visual or oral presentation of the text, identifying where each version reflects specific descriptions and directions in the text.</p>                                  | <p>ELL Targeted Support: Visual and Contextual Support, T247<br/>           ELL Targeted Support: Visual and Contextual Support, T250<br/> <b>Unit 3:</b><br/>           Analyze Graphic Features, T196–T197,<br/>           Possible Teaching Point: Read Like a Writer: Author's Craft, T239<br/> <b>Unit 4:</b><br/>           Interact with Sources: Fairy Tales, T158–T159<br/>           Explain Elements of Drama, T188</p> <p><b>Digital Resources:</b> <i>Book Club: Trade Books:</i> Units 1–5; <i>Leveled Readers:</i> Units 1–5; <i>Professional Development Center:</i> Comprehension &amp; Assessment</p>  |
| <p><b>Integration of Knowledge and Ideas Text Analysis</b></p>  |  |
| <p>CC.1.3.4.H Compare and contrast similar themes, topics, and patterns of events in literature, including texts from different cultures.</p>   | <p><b>Unit 2:</b><br/>           Compare Texts, T27<br/> <b>Unit 4:</b><br/>           Synthesize Information About Characters, T56–T57, T58–T59<br/>           Reflect and Share, T60<br/>           Guided Reading Instruction Prompts: Make Connections, T97<br/>           Make Connections, T124–T125<br/>           Guided Reading Instruction Prompts: Compare Texts, T165<br/>           Reflect and Share: Write to Sources, T268–T269<br/>           Analyze Myths, T332–T333</p> <p><b>Digital Resources:</b> <i>Book Club: Trade Books:</i> Units 1–5; <i>Leveled Readers:</i> Units 1–5; <i>Professional Development Center:</i> Comprehension &amp; Assessment</p> |
| <p><b>Vocabulary Acquisition and Use Strategies</b></p>   |  |
| <p>CC.1.3.4.I Determine or clarify the meaning of unknown and multiple-meaning words and phrases based on grade-level reading and content, choosing flexibly from a range of strategies and</p> | <p>This standard is met throughout the program. See the following representative citations:<br/> <b>Unit 1:</b><br/>           Develop Vocabulary, T46, T112, T176, T244, T322</p>   |

**A Correlation of myView Literacy ©2020, Grade 4  
To the Pennsylvania Core Standards for English Language Arts**

| <p style="text-align: center;"><b>Pennsylvania Core Standards<br/>for English Language Arts</b></p>   | <p style="text-align: center;"><b>myView Literacy<br/>Grade 4, ©2020</b></p>   |
|---|--|
| <p>tools.</p>   | <p><b>Unit 2:</b><br/>Develop Vocabulary, T50, T124, T188, T254, T324<br/><b>Unit 3:</b><br/>Academic Vocabulary, T20, T80, T146, T218, T298<br/><b>Unit 4:</b><br/>Develop Vocabulary, T20, T90, T158, T226, T298<br/><b>Unit 5:</b><br/>Develop Vocabulary, T44, T110, T184, T250, T320</p> <p><b>Digital Resources: Digital Resources:</b> <i>Resource Download Center: Spelling; Vocabulary</i></p>  |
| <p><b>Vocabulary Acquisition and Use</b></p>  |  |
| <p>CC.1.3.4.J Acquire and use accurately grade-appropriate conversational, general academic, and domain-specific words and phrases, including those that signal precise actions, emotions, or states of being and that are basic to a particular topic.</p> | <p>This standard is met throughout the program. See the following representative citations:</p> <p><b>Unit 1:</b><br/>Academic Vocabulary, T20, T88, T154, T218, T286<br/>Develop Vocabulary, T46, T112, T176, T244, T322<br/><b>Unit 2:</b><br/>Academic Vocabulary, T20, T92, T166, T230, T296<br/>Develop Vocabulary, T50, T124, T188, T254, T324<br/><b>Unit 3:</b><br/>Develop Vocabulary, T38, T104, T176, T256<br/>Academic Vocabulary, T20, T80, T146, T218, T298<br/><b>Unit 4:</b><br/>Academic Vocabulary, T48, T116, T184, T256, T328<br/>Develop Vocabulary, T20, T90, T158, T226, T298<br/><b>Unit 5:</b><br/>Academic Words, T20, T86, T152, T226, T292<br/>Develop Vocabulary, T44, T110, T184, T250, T320</p> <p><b>Digital Resources: Digital Resources:</b> <i>Resource Download Center: Spelling; Vocabulary</i></p> |
| <p><b>Range of Reading</b></p>  |  |
| <p>CC.1.3.4.K Read and comprehend literary fiction on grade level, reading independently and proficiently.</p>  | <p><b>Unit 1:</b><br/>Matching Texts to Learning (Leveled Readers), T94-T95, T160-T161, T224-T225<br/><b>Unit 2:</b><br/>Matching Texts to Learning (Leveled Readers), T98-T99, T172-T173, T236-T237</p>   |

**A Correlation of myView Literacy ©2020, Grade 4  
To the Pennsylvania Core Standards for English Language Arts**

| <p style="text-align: center;"><b>Pennsylvania Core Standards<br/>for English Language Arts</b></p>  | <p style="text-align: center;"><b>myView Literacy<br/>Grade 4, ©2020</b></p>  |
|--|---|
|  | <p>Compare Texts, T173</p> <p><b>Unit 3:</b><br/>Matching Texts to Learning (Leveled Readers), T26-T27, T86-T87, T224-T225, T304-T305</p> <p><b>Unit 4:</b><br/>Matching Texts to Learning (Leveled Readers), T26-T27, T96-T97, T164-T165, T304-T305<br/>Compare Texts, T165</p> <p><b>Unit 5:</b><br/>Matching Texts to Learning (Leveled Readers), T26-T27, T298-T299</p> <p><b>Digital Resources: Digital Resources:</b> <i>Book Club: Trade Books: Units 1–5; Leveled Readers: Levels 1–5</i></p> |
| <p><b>CC.1.4.4 Writing:</b> Students write for different purposes and audiences. Students write clear and focused text to convey a well-defined perspective and appropriate content.</p> |   |
| <p><b>Informative/Explanatory</b></p>  |   |
| <p>CC.1.4.4.A Write informative/explanatory texts to examine a topic and convey ideas and information clearly.</p>   | <p><b>Unit 2:</b><br/>Informative Article, T78–T87, T152–T161, T216–T225, T282–T291, T352–T361</p> <p><b>Digital Resources:</b> <i>Writing Anchor Charts and Minilessons; Resource Download Center: Writing Workshop Peer Evaluation Rubric; Writing Workshop Conference Notes</i></p>  |
| <p><b>Informative/Explanatory Focus</b></p>  |   |
| <p>CC.1.4.4.B Identify and introduce the topic clearly.</p>  | <p><b>Unit 2:</b><br/>Develop an Introduction, T155, T156<br/>Minilesson: Compose Captions for Visuals, T159<br/>Group Paragraphs into Sections, T219<br/>Minilesson: Compose a Headline, T220<br/>Minilesson: Compose Body Paragraphs, T221<br/>Minilesson: Compose with Multimedia, T224</p>  |

**A Correlation of myView Literacy ©2020, Grade 4  
To the Pennsylvania Core Standards for English Language Arts**

| <b>Pennsylvania Core Standards<br/>for English Language Arts</b>  | <b>myView Literacy<br/>Grade 4, ©2020</b>  |
|---|--|
|   | <b>Digital Resources:</b> <i>Writing Anchor Charts and Minilessons</i>   |
| <b>Informative/Explanatory Content</b>  |  |
| CC.1.4.4.C Develop the topic with facts, definitions, concrete details, quotations, or other information and examples related to the topic; include illustrations and multimedia when useful to aiding comprehension.                       | <b>Unit 2:</b><br>Minilesson: Develop Relevant Details, T157<br>Minilesson: Develop Different Types of Details, T158<br><br><b>Digital Resources:</b> <i>Writing Anchor Charts and Minilessons</i>   |
| <b>Informative/Explanatory Organization</b>   |  |
| CC.1.4.4.D Group related information in paragraphs and sections, linking ideas within categories of information using words and phrases; provide a concluding statement or section; include formatting when useful to aiding comprehension. | <b>Unit 2:</b><br>Minilesson: Compose Captions For Visuals, T159<br>Minilesson: Develop a Conclusion, T160<br>Minilesson: Compose A Headline, T220<br>Minilesson: Prepare for Assessment, T359<br>Minilesson: Develop Transitions, T223<br>Edit for Coordinating Conjunctions, T285<br>Minilesson: Use Linking Words and Phrases, T286<br>Minilesson: Edit for Coordinating Conjunctions, T290<br><br><b>Digital Resources:</b> <i>Writing Anchor Charts and Minilessons</i> |
| <b>Informative/Explanatory Style</b>  |  |
| CC.1.4.4.E Use precise language and domain-specific vocabulary to inform about or explain the topic.  | <b>Unit 2:</b><br>Minilesson: Develop Different Types of Details, T158<br>Minilesson: Use Precise Language and Vocabulary, T287<br>Use Academic Words, T367<br><br><b>Digital Resources:</b> <i>Writing Anchor Charts and Minilessons</i>  |

**A Correlation of myView Literacy ©2020, Grade 4  
To the Pennsylvania Core Standards for English Language Arts**

| Pennsylvania Core Standards<br>for English Language Arts   | myView Literacy<br>Grade 4, ©2020   |
|--|---|
| <b>Informative/Explanatory Conventions of Language</b>   |   |
| CC.1.4.4.F Demonstrate a grade-appropriate command of the conventions of standard English grammar, usage, capitalization, punctuation, and spelling. | <p><b>Unit 1:</b><br/>Language &amp; Conventions, T72–T73, T202–T203, T270–T271<br/>Writing: Parts of Speech, T280, T354<br/>Minilesson: Edit for Punctuation Marks, T355</p> <p><b>Unit 2:</b><br/>Language &amp; Conventions, T76–T77, T280–T281, T350–T351<br/>Writing: Parts of Speech, T281, T289<br/>Minilesson: Edit for Capitalization, T288</p> <p><b>Unit 3:</b><br/>Language &amp; Conventions, T130–T131, T282–T283, T342–T343<br/>Minilesson: Mentor Stack: Edit for Punctuation, T289<br/>Minilesson: Edit for Capitalization, T349<br/>Writing: Parts of Speech, T65, T283</p> <p><b>Unit 4:</b><br/>Language &amp; Conventions, T74–T75, T142–T143, T282–T283<br/>Writing: Parts of Speech, T143, T283</p> <p><b>Unit 5:</b><br/>Language &amp; Conventions, T70–T71, T276–T277, T346–T347<br/>Writing: Parts of Speech, T282, T285</p> <p><b>Digital Resources:</b> <i>Language Awareness Handbook; Resource Download Center: Language and Conventions</i></p> |
| <b>Opinion/Argumentative</b>   |   |
| CC.1.4.4.G Write opinion pieces on topics or texts.  | <p><b>Unit 1:</b><br/>Write to Sources, T124</p> <p><b>Unit 4:</b><br/>Opinion Essay, T76–T85, T144–T152, T212–T221, T284–T293, T356–T365</p> <p><b>Digital Resources:</b> <i>Writing Anchor Charts and Minilessons; Resource Download Center: Writing Workshop Peer Evaluation Rubric; Writing Workshop Conference Notes</i></p>   |

**A Correlation of myView Literacy ©2020, Grade 4  
To the Pennsylvania Core Standards for English Language Arts**

| <p style="text-align: center;"><b>Pennsylvania Core Standards<br/>for English Language Arts</b></p> | <p style="text-align: center;"><b>myView Literacy<br/>Grade 4, ©2020</b></p>   |
|---|--|
| <p><b>Opinion/Argumentative Focus</b></p>   |  |
| <p>CC.1.4.4.H Introduce the topic and state an opinion on the topic.</p>                            | <p><b>Unit 4:</b><br/>                     Minilesson: Brainstorm a Topic and Opinion, T83<br/>                     Minilesson: Develop a Topic and Opinion, T148<br/>                     Minilesson: Compose the Introduction and Conclusion, T216<br/>                     Minilesson: Organize Reasons, T217<br/>                     Minilesson: Organize Supporting Details, T218<br/>                     Minilesson: Rearrange Ideas for Coherence and Clarity, T288<br/>                     Minilesson: Combine Ideas for Coherence and Clarity, T289<br/>                     Writing Assessment: Opinion Essay, T365</p> <p><b>Digital Resources:</b> <i>Writing Anchor Charts and Minilessons</i></p> |
| <p><b>Opinion/Argumentative Content</b></p>   |  |
| <p>CC.1.4.4.I Provide reasons that are supported by facts and details.</p>                          | <p><b>Unit 4:</b><br/>                     Genre Immersion Lesson, T80<br/>                     Writing Support, T80<br/>                     Independent Writing, T80<br/>                     Genre Immersion Lesson, T81<br/>                     Minilesson: Understand Reasons and Information, T82<br/>                     Minilesson: Brainstorm a Topic and Opinion, T83<br/>                     Minilesson: Develop a Topic and Opinion, T148<br/>                     Minilesson: Develop Supporting Details and Facts, T150<br/>                     Minilesson: Write to Sources, T196</p>   |

**A Correlation of myView Literacy ©2020, Grade 4  
To the Pennsylvania Core Standards for English Language Arts**

| <p style="text-align: center;"><b>Pennsylvania Core Standards<br/>for English Language Arts</b></p>   | <p style="text-align: center;"><b>myView Literacy<br/>Grade 4, ©2020</b></p>   |
|---|--|
|   | <p>Minilesson: Organize Reasons, T217<br/>Minilesson: Organize Supporting Details, T218</p> <p><b>Digital Resources:</b> <i>Writing Anchor Charts and Minilessons</i></p>  |
| <p><b>Opinion/Argumentative Organization</b></p>  |  |
| <p>CC.1.4.4.J Create an organizational structure that includes related ideas grouped to support the writer's purpose and linked in a logical order with a concluding statement or section related to the opinion.</p> | <p><b>Unit 3:</b><br/>Collaborate and Discuss, T364-T365</p> <p><b>Unit 4:</b><br/>Minilesson: Develop A Concluding Statement, T151<br/>ELL Targeted Support: Use Transition and Phrases, T215<br/>Minilesson: Compose the Introduction and Conclusion, T216<br/>Independent Writing, T216<br/>Minilesson: Use Transition Words and Phrases, T219</p> <p><b>Digital Resources:</b> <i>Writing Anchor Charts and Minilessons</i></p>  |
| <p><b>Opinion/Argumentative Style</b></p>   |  |
| <p>CC.1.4.4.K Choose words and phrases to convey ideas precisely.</p>   | <p><b>Unit 1:</b><br/>Write to Sources, T124</p> <p><b>Unit 4:</b><br/>Opinion Essay, T76-T85, T144-T152, T212-T221, T284-T293, T356-T365</p> <p><b>Digital Resources:</b> <i>Writing Anchor Charts and Minilessons</i></p>  |
| <p><b>Opinion/Argumentative Conventions of Language</b></p>   |  |
| <p>CC.1.4.4.L Demonstrate a grade-appropriate command of the conventions of standard English grammar, usage, capitalization, punctuation, and spelling.</p>   | <p><b>Unit 1:</b><br/>Language &amp; Conventions, T72-T73, T202-T203, T270-T271<br/>Writing: Parts of Speech, T280, T354<br/>Minilesson: Edit for Punctuation Marks, T355</p> <p><b>Unit 2:</b><br/>Language &amp; Conventions, T76-T77, T280-T281, T350-T351<br/>Writing: Parts of Speech, T281, T289<br/>Minilesson: Edit for Capitalization, T288</p> <p><b>Unit 3:</b><br/>Language &amp; Conventions, T130-T131, T282-T283, T342-T343<br/>Minilesson: Mentor Stack: Edit for Punctuation,</p> |

**A Correlation of myView Literacy ©2020, Grade 4  
To the Pennsylvania Core Standards for English Language Arts**

| <p style="text-align: center;"><b>Pennsylvania Core Standards<br/>for English Language Arts</b></p>           | <p style="text-align: center;"><b>myView Literacy<br/>Grade 4, ©2020</b></p>  |
|---|---|
|   | <p>T289<br/>Minilesson: Edit for Capitalization, T349<br/>Writing: Parts of Speech, T65, T283<br/><b>Unit 4:</b><br/>Language &amp; Conventions, T74–T75, T142–T143, T282–T283<br/>Writing: Parts of Speech, T143, T283<br/><b>Unit 5:</b><br/>Language &amp; Conventions, T70–T71, T276–T277, T346–T347<br/>Writing: Parts of Speech, T282, T285<br/><br/><b>Digital Resources:</b> <i>Language Awareness Handbook; Resource Download Center: Language and Conventions</i></p>                               |
| <p><b>Narrative</b></p>   |   |
| <p>CC.1.4.4.M Write narratives to develop real or imagined experiences or events.</p>                         | <p><b>Unit 1:</b><br/>Personal Narrative, T74–T83, T140–T149, T204–T213, T272–T281, T350–T359<br/><b>Unit 3:</b><br/>Realistic Fiction, T66–T75, T132–T141, T204–T213, T284–T293, T344–T353<br/><br/><b>Digital Resources:</b> <i>Writing Anchor Charts and Minilessons; Resource Download Center: Writing Workshop Peer Evaluation Rubric; Writing Workshop Conference Notes</i></p>   |
| <p><b>Narrative Focus</b></p>   |   |
| <p>CC.1.4.4.N Orient the reader by establishing a situation and introducing a narrator and/or characters.</p> | <p><b>Unit 1:</b><br/>Genre Immersion Lesson: Know the Narrator, T79<br/>Minilesson: Plan Your Personal Narrative, T82<br/>Minilesson: Portray People, T144<br/>Minilesson: Develop an Idea with Relevant Details, T146<br/>Minilesson: Develop and Compose an Introduction, T208<br/>Share Back, T208<br/><b>Unit 3:</b><br/>Minilesson: Compose a Character Description: External, T136<br/>Minilesson: Compose a Character Description: Internal, T137<br/>Minilesson: Compose an Event Sequence, T209</p> |



**A Correlation of myView Literacy ©2020, Grade 4  
To the Pennsylvania Core Standards for English Language Arts**

| <b>Pennsylvania Core Standards<br/>for English Language Arts</b>  | <b>myView Literacy<br/>Grade 4, ©2020</b>   |
|---|---|
|   | <b>Digital Resources:</b> <i>Writing Anchor Charts and Minilessons</i>  |
| <b>Narrative Content</b>  |   |
| CC.1.4.4.O Use dialogue and descriptions to develop experiences and events or show the responses of characters to situations; use concrete words and phrases and sensory details to convey experiences and events precisely.  | <p><b>Unit 1:</b><br/>Minilesson: Use Concrete Words and Phrases, T147<br/>Minilesson: Compose with Sensory Details, T148<br/>Minilesson: Compose Dialogue, T211<br/>Independent Writing, T211</p> <p><b>Unit 3:</b><br/>Minilesson: Compose Dialogue, T210</p> <p><b>Digital Resources:</b> <i>Writing Anchor Charts and Minilessons</i></p> |
| <b>Narrative Organization</b>   |   |
| CC.1.4.4.P Organize an event sequence that unfolds naturally, using a variety of transitional words and phrases to manage the sequence of events; provide a conclusion that follows from the narrated experiences and events. | <p><b>Unit 1:</b><br/>ELL Targeted Support: Use Transition Words and Phrases, T207<br/>Minilesson: Use Transition Words and Phrases, T210<br/>Independent Writing, T210</p> <p><b>Unit 3:</b><br/>Minilesson: Compose an Event Sequence, T209</p> <p><b>Digital Resources:</b> <i>Writing Anchor Charts and Minilessons</i></p>               |
| <b>Narrative Style</b>  |   |
| CC.1.4.4.Q Choose words and phrases to convey ideas precisely.  | <p><b>Unit 1:</b><br/>Personal Narrative, T74–T83, T140–T149, T204–T213, T272–T281, T350–T359</p> <p><b>Unit 3:</b><br/>Realistic Fiction, T66–T75, T132–T141, T204–T213, T284–T293, T344–T353</p>  |

**A Correlation of myView Literacy ©2020, Grade 4  
To the Pennsylvania Core Standards for English Language Arts**

| <p style="text-align: center;"><b>Pennsylvania Core Standards<br/>for English Language Arts</b></p>  | <p style="text-align: center;"><b>myView Literacy<br/>Grade 4, ©2020</b></p>   |
|--|--|
|  | <p><b>Digital Resources:</b> <i>Writing Anchor Charts and Minilessons</i></p>  |
| <p><b>Narrative Conventions of Language</b></p>  |  |
| <p>CC.1.4.4.R Demonstrate a grade-appropriate command of the conventions of standard English grammar, usage, capitalization, punctuation, and spelling.</p> <p>(Continued)</p>                     | <p><b>Unit 1:</b><br/>Language &amp; Conventions, T72–T73, T202–T203, T270–T271<br/>Writing: Parts of Speech, T280, T354<br/>Minilesson: Edit for Punctuation Marks, T355</p> <p><b>Unit 2:</b><br/>Language &amp; Conventions, T76–T77, T280–T281, T350–T351<br/>Writing: Parts of Speech, T281, T289<br/>Minilesson: Edit for Capitalization, T288</p> <p><b>Unit 3:</b><br/>Language &amp; Conventions, T130–T131, T282–T283, T342–T343<br/>Minilesson: Mentor Stack: Edit for Punctuation, T289<br/>Minilesson: Edit for Capitalization, T349<br/>Writing: Parts of Speech, T65, T283</p> <p>(Continued)</p> <p><b>Unit 4:</b><br/>Language &amp; Conventions, T74–T75, T142–T143, T282–T283<br/>Writing: Parts of Speech, T143, T283</p> <p><b>Unit 5:</b><br/>Language &amp; Conventions, T70–T71, T276–T277, T346–T347<br/>Writing: Parts of Speech, T282, T285</p> <p><b>Digital Resources:</b> <i>Language Awareness Handbook; Resource Download Center: Language and Conventions</i></p> |
| <p><b>Response to Literature</b></p>   |  |
| <p>CC.1.4.4.S Draw evidence from literary or informational texts to support analysis, reflection, and research, applying grade-level reading standards for literature and informational texts.</p> | <p><b>Unit 1:</b><br/>Minilesson: Write to Sources, T124, T188<br/>My View, T125</p> <p><b>Unit 2:</b><br/>Minilesson: Write to Sources, T136, T200<br/>My View, T137, T201</p>  |

**A Correlation of myView Literacy ©2020, Grade 4  
To the Pennsylvania Core Standards for English Language Arts**

| <p style="text-align: center;"><b>Pennsylvania Core Standards<br/>for English Language Arts</b></p>   | <p style="text-align: center;"><b>myView Literacy<br/>Grade 4, ©2020</b></p>  |
|---|---|
|   | <p><b>Unit 3:</b><br/>Minilesson: Write to Sources, T116, T268<br/>My View, T117<br/>, T269</p> <p><b>Unit 4:</b><br/>Minilesson: Write to Sources, T128, T268<br/>My View, T129, T269</p> <p><b>Unit 5:</b><br/>Minilesson: Write to Sources, T122, T262<br/>My View, T123, T263</p> <p><b>Digital Resources:</b> <i>Writing Anchor Charts and Minilessons</i></p>   |
| <b>Production and Distribution of Writing/Writing Process</b>   |   |
| <p>CC.1.4.4.T With guidance and support from peers and adults, develop and strengthen writing as needed by planning, revising, and editing.</p> | <p><b>Unit 1:</b><br/>Plan and Prewrite, T82<br/>Edit, T278–T280, T354–T355<br/>Revise and Edit, T376</p> <p><b>Unit 2</b><br/>Plan and Prewrite, T86<br/>Edit, T288–T290, T356, T357<br/>Peer Review, T378</p> <p><b>Unit 3:</b><br/>Plan and Prewrite, T74, T211<br/>Edit, T289–T292, T349<br/>Peer Review, T370</p> <p><b>Unit 4:</b><br/>Plan and Prewrite, T84<br/>Edit, T290–T292<br/>Minilesson: Publish a Final Draft, T361</p> <p><b>Unit 5:</b><br/>Edit, T285, T286<br/>Revise, T283, T284<br/>Revise and Edit, T374</p> |

**A Correlation of myView Literacy ©2020, Grade 4  
To the Pennsylvania Core Standards for English Language Arts**

| <p style="text-align: center;"><b>Pennsylvania Core Standards<br/>for English Language Arts</b></p>  | <p style="text-align: center;"><b>myView Literacy<br/>Grade 4, ©2020</b></p>   |
|--|--|
|  | <p><b>Digital Resources:</b> <i>Writing Anchor Charts and Minilessons; Resource Download Center: Writing Workshop Peer Evaluation Rubric; Writing Workshop Conference Notes</i></p>  |
| <p><b>Technology and Publication</b></p>   |  |
| <p>CC.1.4.4.U With some guidance and support, use technology, including the Internet, to produce and publish writing as well as to interact and collaborate with others; demonstrate sufficient command of keyboarding skills to type a minimum of one page in a single sitting.</p> | <p><b>Unit 1:</b><br/>           Minilesson: Publish and Celebrate, T356<br/>           Customize It!, T370<br/>           Collaborate, T374<br/>           Extend Research: Incorporate Media, T374<br/>           Celebrate!, T378</p> <p><b>Unit 2:</b><br/>           Minilesson: Compose with Multimedia, T224<br/>           Extend Research: Incorporate Media, T376</p> <p><b>Unit 4:</b><br/>           Use Technology to Produce Writing, T152–T153<br/>           Use Technology to Cooperate, T220–T221<br/>           Publish a Final Draft, T361<br/>           Extend Research: Incorporate Media, T378<br/>           Extend Research: Create a Strong Media Message, T380–T381</p> <p><b>Unit 5:</b><br/>           Customize It!, T374</p> <p><b>Digital Resources:</b> <i>Writing Anchor Charts and Minilessons; Resource Download Center: Writing Workshop Peer Evaluation Rubric; Writing</i></p> |

**A Correlation of myView Literacy ©2020, Grade 4  
To the Pennsylvania Core Standards for English Language Arts**

| <p style="text-align: center;"><b>Pennsylvania Core Standards<br/>for English Language Arts</b></p>   | <p style="text-align: center;"><b>myView Literacy<br/>Grade 4, ©2020</b></p>   |
|---|--|
|   | Workshop Conference Notes  |
| <p><b>Conducting Research</b></p>   |  |
| <p>CC.1.4.4.V Conduct short research projects that build knowledge through investigation of different aspects of a topic.</p> <p>(Continued)</p>  | <p><b>Unit 1:</b><br/>           Inquire: Introduce the Project, T364–T365<br/>           Conduct Research: Field Research, T368–t369<br/>           Refine Research: Primary and Secondary Sources, T372–T373<br/>           Extend Research: Incorporate Media, T374–T375<br/> <b>Unit 2:</b><br/>           Inquire: Introduce the Project, T366–T367<br/>           Conduct Research: Library Databases, T370-T371<br/>           Refine Research: Develop a Bibliography, T372–T373<br/>           Extend Research: Incorporate Media, T376-T377<br/> <b>Unit 3:</b><br/>           Inquire: Introduce the Project, T358–T359<br/>           Conduct Research: Search Engines, T362-T363<br/>           Refine Research: Avoiding Plagiarism, T366–T367<br/>           Extend Research: Incorporate Media, T368-T369<br/>           (Continued)<br/> <b>Unit 4:</b><br/>           Inquire: Introduce the Project, T370–T371<br/>           Conduct Research: Request Information, T374-T375<br/>           Refine Research: Creating a Bibliography, T378–T379<br/>           Extend Research: Create a Strong Media Message, T380-T381<br/> <b>Unit 5:</b><br/>           Inquire: Introduce the Project, T362–T363<br/>           Conduct Research: Expert Assistance, T366–T367<br/>           Refine Research: Primary and Secondary Sources, T370–T371<br/>           Extend Research: Extend Research, T372–T373<br/> <br/> <b>Digital Resources:</b> <i>Resource Download Center:</i><br/>           Inquiry-Based Project Rubrics and Checklists</p> |
| <p><b>Credibility, Reliability, and Validity of Sources</b></p>   |  |
| <p>CC.1.4.4.W Recall relevant information from experiences or gather relevant information from print and digital sources; take notes and categorize information, and provide a list of sources.</p> | <p><b>Unit 1:</b><br/>           Brainstorm and Set a Purpose, T81<br/>           Develop an Idea with Relevant Details, T146<br/>           Inquire: Introduce the Project, T364–T365<br/>           Conduct Research: Field Research, T368–t369</p>  |

**A Correlation of myView Literacy ©2020, Grade 4  
To the Pennsylvania Core Standards for English Language Arts**

| <p style="text-align: center;"><b>Pennsylvania Core Standards<br/>for English Language Arts</b></p>   | <p style="text-align: center;"><b>myView Literacy<br/>Grade 4, ©2020</b></p>   |
|---|--|
| <p>(Continued)</p>  | <p>Refine Research: Primary and Secondary Sources, T372–T373<br/>           Extend Research: Incorporate Media, T374–T375<br/> <b>Unit 2:</b><br/>           Inquire: Introduce the Project, T366–T367<br/>           Conduct Research: Library Databases, T370–T371<br/>           Refine Research: Develop a Bibliography, T374–T375<br/>           Extend Research: Incorporate Media, T376–T377<br/> <b>Unit 3:</b><br/>           Inquire: Introduce the Project, T358–T359<br/>           Conduct Research: Search Engines, T362–T363<br/>           Refine Research: Avoiding Plagiarism, T366–T367<br/>           Extend Research: Incorporate Media, T368–T369</p> <p>(Continued)</p> <p><b>Unit 4:</b><br/>           Inquire: Introduce the Project, T370–T371<br/>           Explore and Plan, T372<br/>           Conduct Research: Request Information, T374–T375<br/>           Refine Research: Creating a Bibliography, T378–T379<br/>           Extend Research: Create a Strong Media Message, T380–T381<br/> <b>Unit 5:</b><br/>           Inquire: Introduce the Project, T362–T363<br/>           T364<br/>           Conduct Research: Expert Assistance, T366–T367<br/>           Refine Research: Primary and Secondary Sources, T370–T371<br/>           Extend Research: Extend Research, T372–T373</p> <p><b>Digital Resources:</b> <i>Resource Download Center:</i><br/>           Inquiry-Based Project Rubrics and Checklists</p> |
| <p><b>Range of Writing</b></p>  |  |
| <p>CC.1.4.4.X Write routinely over extended time frames (time for research, reflection, and revision) and shorter time frames (a single sitting or a day or two) for a range of discipline-specific tasks, purposes, and audiences.</p> | <p><b>Unit 1:</b><br/>           Minilesson: Brainstorm and Set a Purpose, T81<br/>           Reflect and Share: Write to Sources, T124–T125<br/>           Independent Writing, T144, T146<br/>           Write for a Reader: Use Text Structure, T198–T199</p>   |

**A Correlation of myView Literacy ©2020, Grade 4  
To the Pennsylvania Core Standards for English Language Arts**

| <p style="text-align: center;"><b>Pennsylvania Core Standards<br/>for English Language Arts</b></p> | <p style="text-align: center;"><b>myView Literacy<br/>Grade 4, ©2020</b></p>  |
|---|---|
| <p>(Continued)</p>  | <p>Reflect and Share: Write to Sources, T188, T256-T257<br/>Write for a Reader: Develop Author’s Purpose, T344-T345<br/><b>Unit 2:</b><br/>Minilesson: Brainstorm and Set a Purpose, T85<br/>Minilesson: Plan Your Travel Article, T86<br/>Minilesson: Write to Sources, T200-T201<br/>Writing Assessment: Travel Article, T361<br/>Write for a Reader, T276-T277, T372</p> <p>(Continued)</p> <p><b>Unit 3:</b><br/>Reflect and Share: Write to Sources, T116-T117, T188-T189<br/>Writing Club, T141<br/>Compose Dialogue, T210<br/>Write for a Reader: Audience, T364<br/>Celebrate and Reflect, T372</p> <p><b>Unit 4:</b><br/>Minilesson: Plan Your Opinion Essay, T84-T85<br/>Minilesson: Use Exaggeration, T138-T139<br/>Independent Writing, T150<br/>Writing Assessment, T365<br/>Next Steps, T375<br/>Write for a Reader: Audience, T376<br/>Collaborate and Discuss, T382</p> <p><b>Unit 5:</b><br/>Reflect and Share: Write to Sources, T122-T123<br/>Writing Workshop, T133<br/>Independent Writing, T144<br/>Write for a Reader: Use Literary Devices, T206-T207<br/>Select a Genre, T221<br/>Writing Assessment, T365</p> <p><b>Digital Resources:</b> <i>Writing Anchor Charts and Minilessons; Resource Download Center: Writing Workshop Peer Evaluation Rubric; Writing Workshop Conference Notes</i></p> |

**A Correlation of myView Literacy ©2020, Grade 4  
To the Pennsylvania Core Standards for English Language Arts**

| <p style="text-align: center;"><b>Pennsylvania Core Standards<br/>for English Language Arts</b></p>   | <p style="text-align: center;"><b>myView Literacy<br/>Grade 4, ©2020</b></p>  |
|---|---|
|   |   |
| <p><b>CC.1.5.4 Speaking and Listening:</b> Students present appropriately in formal speaking situations, listen critically, and respond intelligently as individuals or in group discussions.</p> |   |
| <p><b>Comprehension and Collaboration Collaborative Discussion</b></p>  |   |
| <p>CC.1.5.4.A Engage effectively in a range of collaborative discussions on grade-level topics and texts, building on others' ideas and expressing their own clearly.</p>                         | <p><b>Unit 1:</b><br/>Interact with Sources, T20–T21<br/>Whole Group, T53, T61, T183, T255<br/>Reflect and Share, T58, T334<br/>Turn, Talk, and Share, T286</p> <p><b>Unit 2:</b><br/>Turn, Talk, and Share, T25, T92, T171<br/>Reflect and Share, T62, T336<br/>Whole Group, T239<br/>Minilesson: Visualize Imagery, T262<br/>Illustrate, T296</p> <p><b>Unit 3:</b><br/>Whole Group, T41, T155, T263, T323<br/>Reflect and Share, T50, T328<br/>Illustrate and Describe, T80<br/>Turn, Talk, and Share, T218</p> <p><b>Unit 4:</b><br/>Whole Group, T59, T63, T99, T199, T235, T307<br/>Turn, Talk, and Share, T90<br/>Explore the Primary Source, T226<br/>Reflect and Share: Talk About It, T340</p> <p><b>Unit 5:</b><br/>Reflect and Share, T56, T332<br/>Whole Group, T59, T125, T235, T257<br/>Turn, Talk, And Share, T152, T226<br/>Explore the Primary Source, T226<br/>Peer Review, T374</p> |



**A Correlation of myView Literacy ©2020, Grade 4  
To the Pennsylvania Core Standards for English Language Arts**

| <p style="text-align: center;"><b>Pennsylvania Core Standards<br/>for English Language Arts</b></p>   | <p style="text-align: center;"><b>myView Literacy<br/>Grade 4, ©2020</b></p>  |
|---|---|
|   | <p><b>Digital Resources:</b> <i>Resource Download Center:</i><br/>Speaking and Listening</p>  |
| <p><b>Comprehension and Collaboration Critical Listening</b></p>  |   |
| <p>CC.1.5.4.B Paraphrase portions of a text read aloud or information presented in diverse media and formats, including visually, quantitatively, and orally.</p> | <p><b>Unit 1:</b><br/>Listening Comprehension, T22-T23<br/>Reflect and Share, T58<br/>Interact with Sources, T286<br/>Summarize a Text, T293, T301, T304, T312, T330-T331</p> <p><b>Unit 2:</b><br/>Listening Comprehension, T22-T23</p> <p><b>Unit 3:</b><br/>Listening Comprehension, T22-T23<br/>Retelling, T94</p> <p><b>Unit 4:</b><br/>Listening Comprehension, T22-T23<br/>Summarize Literary Text, T182, T192-T193<br/>Retell, T242, T248</p> <p><b>Unit 5:</b><br/>Listening Comprehension, T22-T23<br/>Summarize Argumentative Text, T172, T176, T181, T192-T193</p> <p><b>Digital Resources:</b> <i>Resource Download Center:</i><br/>Speaking and Listening</p> |
| <p><b>Comprehension and Collaboration Evaluating Information</b></p>  |   |
| <p>CC.1.5.4.C Identify the reasons and evidence a speaker provides to support particular points.</p>  | <p><b>Unit 3:</b><br/>Reflect and Share, T50–T51</p> <p><b>Unit 5:</b><br/>Reflect and Share, T56<br/>Close Read: Analyze Argument, T164, T165, T168, T171, T175<br/>Analyze Argument, T188-T189</p>  |

**A Correlation of myView Literacy ©2020, Grade 4  
To the Pennsylvania Core Standards for English Language Arts**

| <p style="text-align: center;"><b>Pennsylvania Core Standards<br/>for English Language Arts</b></p>  | <p style="text-align: center;"><b>myView Literacy<br/>Grade 4, ©2020</b></p>   |
|--|--|
|  | <p><b>Digital Resources:</b> <i>Resource Download Center:</i><br/>Speaking and Listening</p>   |
| <p><b>Presentation of Knowledge and Ideas Purpose, Audience, and Task</b></p>  |  |
| <p>CC.1.5.4.D Report on a topic or text, tell a story, or recount an experience in an organized manner, using appropriate facts and relevant, descriptive details to support main ideas or themes; speaking clearly with adequate volume, appropriate pacing, and clear pronunciation.</p> | <p><b>Unit 1:</b><br/>Reflect and Share, T58, T334<br/>Share Back, T82, T142<br/>Celebrate and Reflect: Celebrate!, T378<br/><b>Unit 2:</b><br/>Reflect and Share, T336<br/>Celebrate and Reflect: Celebrate!, T378<br/><b>Unit 3:</b><br/>Share Back, T74<br/>Retelling, T94<br/>Reflect and Share, T328<br/>Publish and Celebrate, T350<br/><b>Unit 4:</b><br/>Reflect and Share, T60, T340<br/>Retell, T242, T248<br/>Publish and Celebrate, T362<br/>Celebrate and Reflect: Celebrate!, T384<br/><b>Unit 5:</b><br/>Reflect and Share, T332<br/>Celebrate and Reflect: Celebrate!, T377</p> <p><b>Digital Resources:</b> <i>Resource Download Center:</i><br/>Speaking and Listening</p> |
| <p><b>Integration of Knowledge and Ideas Context</b></p>   |  |
| <p>CC.1.5.4.E Differentiate between contexts that require formal English versus informal situations.</p>   | <p><b>Unit 1:</b><br/>Celebrate and Reflect, T378<br/><b>Unit 2:</b><br/>Reflect and Share, T336<br/><b>Unit 3:</b><br/>Write for a Reader, T364<br/>Revise and Edit, T370</p>   |

**A Correlation of myView Literacy ©2020, Grade 4  
To the Pennsylvania Core Standards for English Language Arts**

| <p style="text-align: center;"><b>Pennsylvania Core Standards<br/>for English Language Arts</b></p>  | <p style="text-align: center;"><b>myView Literacy<br/>Grade 4, ©2020</b></p>   |
|--|--|
|  | <p>ELL Targeted Support, T371<br/> <b>Unit 4:</b><br/>           Write for a Reader, T376<br/>           Celebrate and Reflect, T384<br/> <b>Unit 5:</b><br/>           Conduct Research: Expert Assistance, T366<br/>           Celebrate and Reflect, T376<br/> <br/> <b>Digital Resources:</b> <i>Resource Download Center:</i><br/>           Speaking and Listening</p>   |
| <p><b>Integration of Knowledge and Ideas Multimedia</b></p>  |  |
| <p>CC.1.5.4.F Add audio recordings and visual displays to presentations when appropriate to enhance the development of main ideas or themes.</p> | <p><b>Unit 1:</b><br/>           Extend Research: Incorporate Media, T374-T375<br/> <b>Unit 2:</b><br/>           Extend Research: Incorporate Media, T376-T377<br/> <b>Unit 3:</b><br/>           Minilesson: Publish and Celebrate, T350<br/>           Extend Research: Incorporate Media, T368-T369<br/> <b>Unit 5:</b><br/>           Minilesson: Publish and Celebrate, T354<br/> <br/> <b>Digital Resources:</b> <i>Resource Download Center:</i><br/>           Speaking and Listening</p>   |
| <p><b>Conventions of Standard English</b></p>  |  |
| <p>CC.1.5.4.G Demonstrate command of the conventions of standard English when speaking, based on Grade 4 level and content.</p>                  | <p><b>Unit 1:</b><br/>           Language &amp; Conventions, T72-T73, T202-T203, T270-T271<br/> <b>Unit 2:</b><br/>           Language &amp; Conventions, T76-T77, T280-T281, T350-T351<br/> <b>Unit 3:</b><br/>           Language &amp; Conventions, T130-T131, T282-T283, T342-T343<br/> <b>Unit 4:</b><br/>           Language &amp; Conventions, T74-T75, T142-T143, T282-T283<br/> <b>Unit 5:</b><br/>           Language &amp; Conventions, T70-T71, T276-T277, T346-T347<br/> <br/> <b>Digital Resources:</b> <i>Resource Download Center:</i><br/>           Speaking and Listening <i>Language Awareness Handbook;</i> <i>Resource Download Center:</i> Language</p> |

**A Correlation of myView Literacy ©2020, Grade 4  
To the Pennsylvania Core Standards for English Language Arts**

| <b>Pennsylvania Core Standards<br/>for English Language Arts</b> | <b>myView Literacy<br/>Grade 4, ©2020</b> |
|--|---|
|  | and Conventions                           |